

Prepared for -
 Custom Home Builder/Remodeler
 Northeast U.S.

ELEVATIONS - 1 of 2

Prepared by -
 Before The Architect
 Cumming, GA
 December 1, 2003
 SHEET 5 of 17

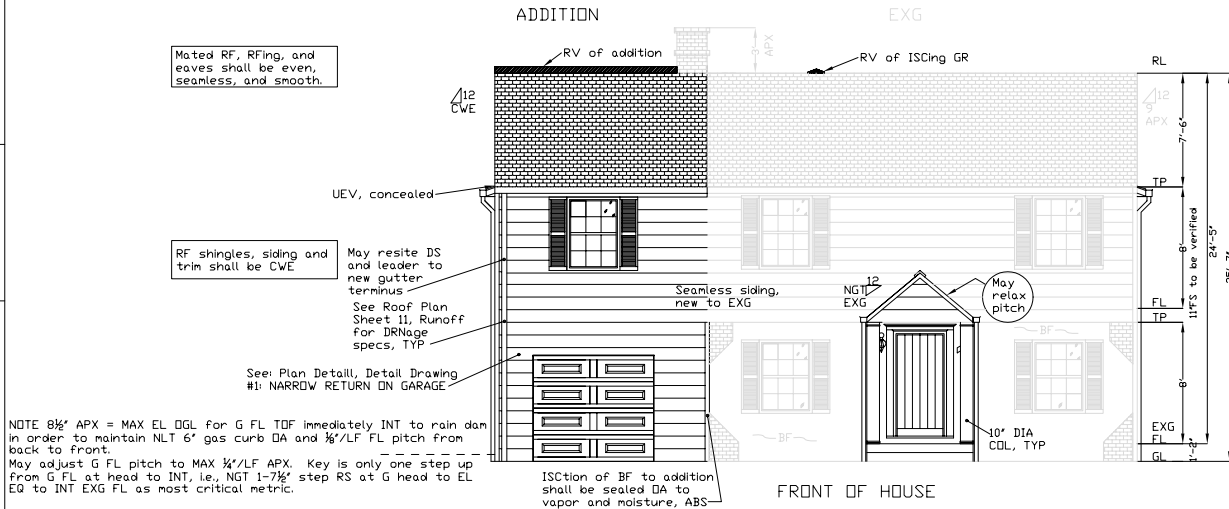
EL NOTES:
 1. Drawing details are illustrative not definitive as to style, slope, etc.
 2. Data are approximate.

SHADE CODE:
 Gray = EXG
 Dark = Addition

KEY TO ABBREVIATIONS:

- ABS = ABSolute
- APX = APProXimately
- BEL = Below
- BF = Brick Face
- BDF = Bottom Df Face
- CLR = CLear
- COL = COLumn
- CONC = CONCrete
- CONT = CONTInuous
- CWE = Consistent w/ EXG
- DIA = DIAMeter
- DK = DeCK
- DN = Down
- DRN = DRaINage
- DS = DownSpout
- EL = ELeVation
- EQ = EDual
- EXG = EXistIng
- FDN = FounDation
- FIN = FINish
- FL = Floor Level
- FR = Family Room
- FS = Floor System
- FTG = FooTing
- G = Garage
- GL = Grade Level
- GR = Gable Ridge
- H = Height
- HDR = HeaDeR
- HH = HDR H (BDF)
- HDR = HORIZontal
- INT = INTERior
- ISC = InterSect
- JST = JoiST
- K = Kitchen
- LF = Linear Foot (feet)
- MAX = MAXimum
- MIN = MINimum
- NGT = Not Greater Than
- NLT = Not Less Than
- OA = Over-All
- DGL = Over Grade Level
- RF = Roof
- RL = Ridge Level
- RNF = ReInFORCE
- RS = RiSEr
- RV = Ridge Vent
- SF = Square Foot (feet)
- SFL = SubFloor
- SV = SoFFit Vent
- TDF = Top Df Face
- TP = Top Plate (TDF)
- TYP = TYPical
- UEV = UnderEave Vent
- W = Width
- X = Except

BIND LEFT



NOTE 8 1/2' APX = MAX EL DGL for G FL TDF immediately INT to rain dan in order to maintain NLT 6' gas curb DA and 3/8' LF FL pitch from back to front.
 May adjust G FL pitch to MAX 1/4' LF APX. Key is only one step up from G FL at head to INT, i.e., NGT 1-7 1/2' step RS at G head to EL EQ to INT EXG FL as most critical metric.

SCALE: 1/4" = 1'-0"

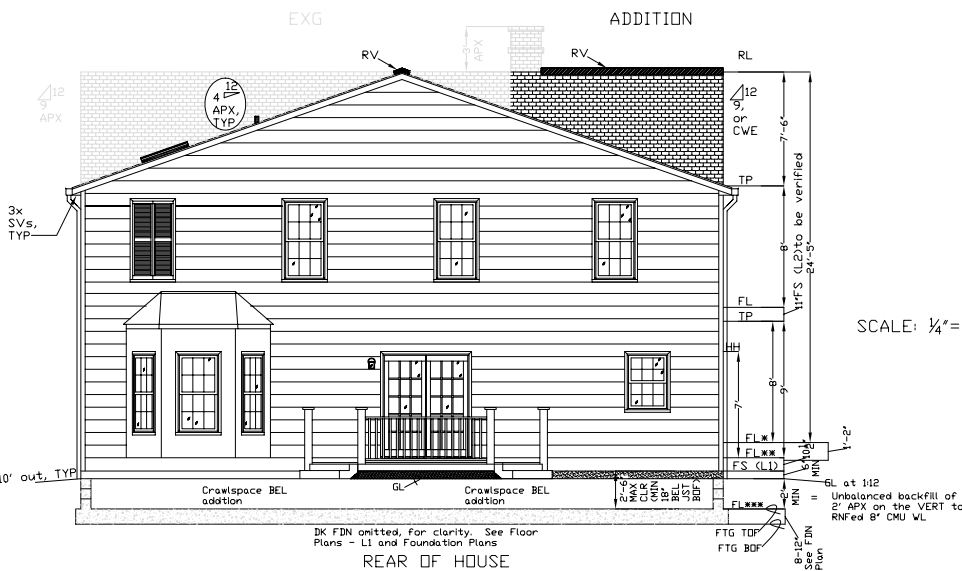
- LEGEND:**
- BF = [Pattern]
 - FINED CONC = [Pattern]
 - Glass = [Pattern]
 - Siding = [Pattern]
 - 3-Tab RF Shingle = [Pattern]
 - Ridge Vent = [Pattern]
 - CONC = [Pattern]
 - Lattice = [Pattern]

NOTE that: FS (L1) = mudsill (1 1/2') + JST (7 1/2') + SFL (3/4') + FIN FL (3/4')
 FS (L2) = JST (9 1/2') + SF (3/4') + FIN FL (3/4')
 To be verified.

KEY:
 FL* = FL at LI DA X K and FR
 FL** = FL at LI in K & FR
 FL*** = FL at Crawspace

Mated RF, Rfing, and eaves shall be even, seamless, and smooth.

RF shingles, siding and trim shall be CWE



SCALE: 1/4" = 1'-0"

Copyright 2003 Before The Architect
<http://www.beforethearchitect.com>
 Errors & Omissions

DISCLAIMER: Before The Architect tried to do its best on this design plan based on knowledge, experience, statements, and instructions. However, others will provide on-site consulting, supervise and control construction, and no one on the planet can ever possibly know all the codes, requirements, means, materials, and other conditions involved in this project; therefore, there cannot be any warranty, express or implied, or respect to the content or use of this plan, including but not limited to any warranty of merchantability or fitness of construction, durability, function, safety, or hazards pre- or post-construction, or any liability for any errors or omissions due to incorrect information shown on this print. Use of this print is absolutely 100% at your own risk.