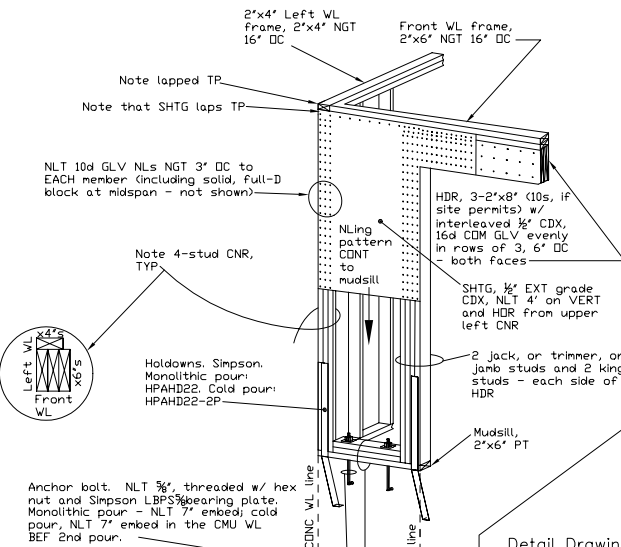


PLAN DETAIL - 2 of 3

KEY TO ABBREVIATIONS:

- | | | | | | | |
|----------------------|-------------------|----------------------|------------------|------------------------|----------------------------|-------------------|
| ABV = Above | CONT = Continuous | EQV = Equivalent | HDR = Header | NGT = Not Greater Than | RFR = RaFteR | TDF = Top Of Face |
| BEF = Before | D = Depth | EXT = Exterior | HDR = Horizontal | NL = Nail | RNF = Reinforced | TP = Top Plate |
| BEL = Below | DBL = Double | FIN = Finish | INS = Insulate | NLT = Not Less Than | ROH = Rear Of House | TYP = Typical |
| BET = Between | DL = Dead Load | FL = Floor Level | INT = Interior | NLS = Not To Scale | RR = Rebar | VERT = Vertical |
| BDF = Bottom Of Face | DN = Down | FLR = Floor | JST = Joist | DA = Over-ALL | S = South | W = West |
| CLG = Ceiling | DR = Door | FOH = Front Of House | L = Length | DC = On Center | SF = Square Foot (Feet) | WB = Wallboard |
| CNR = CorNER | DRN = Drain | FTG = Footing | LL = Live Load | DGL = Over Grade Level | SHTG = SheThinG | WL = Wall |
| CDM = Common | E = East | G = Garage | MAX = Maximum | PERP = PERpendicular | STRC = STRucture | X = eXcept |
| CDNC = CDNcrete | EL = Elevation | GL = Grade Level | MIN = Minimum | PT = Pressure-Treated | SYP = Southern Yellow Pine | |
| | EQ = Equal | GLV = Galvanized | N = North | REF = Reference | T&G = Tongue & Groove | |

Detail Drawing #1:
 NARROW RETURN ON GARAGE - SUGGESTED REMEDIATION. LINE
 PERSPECTIVE. NTS



Note triple sole, especially note that all studs butt to the bottom-most sole and the other 2 plates run BET the stud STRCS - minimizes lateral instability, or wobble.

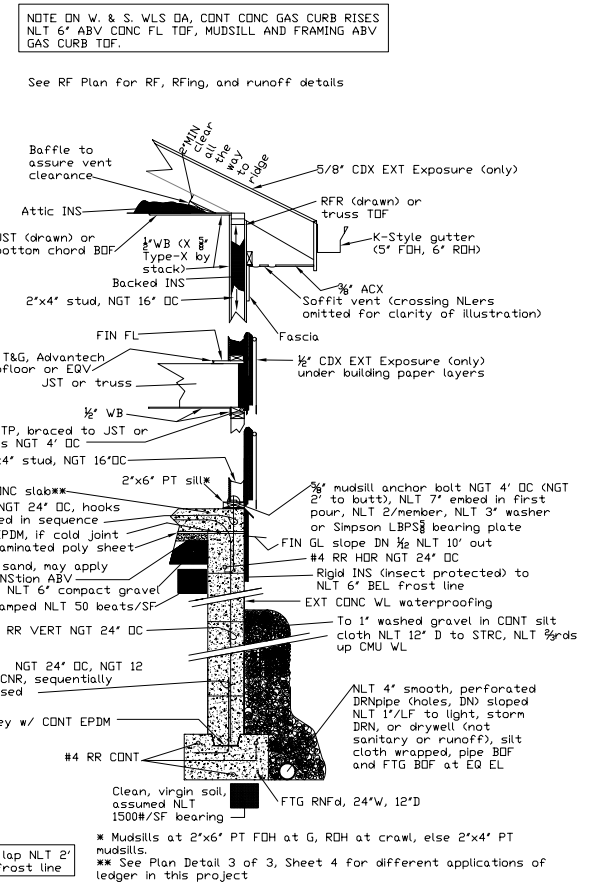
NOTE that this illustration is based on and improves upon the following: "Common Engineering Problems in Frame Construction, Garage wall and cripple walls need extra bracing" by David Utterback, "Fine Homebuilding Magazine", December 1999/January 2000, #128, pp110-115.

SPAN TABLE

NLT #2 SYP	Spaced DC	FLR		CLG		RFR**		+Tile		+Comp./ Wood	
		60#LL/20#DL L/480MLL	20#LL/10#DL L/240LL	40#LL L/240LL	20#DL	10#DL	MAX Clearspan	MAX Clearspan			
2"x4"	12' 16'	----- -----	9'-10" 8'-11"	12' 16'	----- -----	----- -----	----- -----	----- -----	----- -----	----- -----	----- -----
2"x6"	12' 16'	8'-5" 7'-5"	13'-6" 13'-6"	12' 16'	11'-9" 10'-2"	12'-3" 11'-2"	----- -----	----- -----	----- -----	----- -----	----- -----
2"x8"	12' 16'	10'-4" 9'-6"	20'-1" 17'-5"	12' 16'	15'-3" 13'-2"	16'-2" 14'-5"	----- -----	----- -----	----- -----	----- -----	----- -----
2"x10"	12' 16'	13'-4" 11'-5"	23'-1" 20'-9"	12' 16'	18'-2" 15'-9"	19'-11" 17'-3"	----- -----	----- -----	----- -----	----- -----	----- -----
2"x12"	12' 16'	15'-7" 13'-6"	----- -----	12' 16'	21'-3" 18'-5"	23'-4" 20'-2"	----- -----	----- -----	----- -----	----- -----	----- -----

*L/360 span table times 0.91 => L/480.
 **CD (a duration factor) = 1.15
 Source: Southern Pine Council, #2 visually graded SYP or EQV w/ selective assistance of F. Woeste, P.E., Ph.D., Professor at Virginia Tech University.
 Note: These data shall apply DA to hand-framing, including the open deck and covered porch.

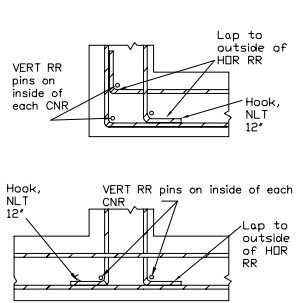
Detail Drawing #4:
 RESIDENTIAL - GENERIC SECTION W/ SLAB. NTS



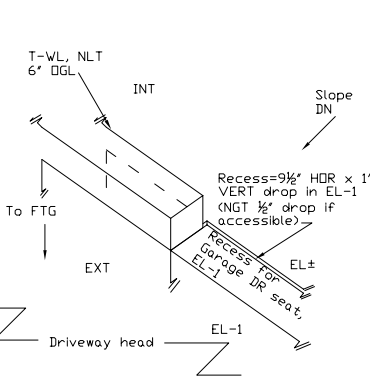
* Mudsills at 2x6 PT FDH at G, RDH at crawl, else 2x4 PT mudsills.
 ** See Plan Detail 3 of 3, Sheet 4 for different applications of ledger in this project

BIND LEFT

Detail Drawing #2:
 RR LAPS @ CNRS, PLAN VIEW
 NTS



Detail Drawing #3:
 GARAGE RAIN DAM (REF LEFTHAND FACING). ISOMETRIC. NTS



DISCLAIMER: Before the Architect tried to do its best on this design plan based on knowledge, experience, statements, and instructions. However, others all provide on-site consulting, supervise and control construction, and no one on the planet can ever possibly know all the codes, requirements, means, materials, and other conditions involved in this project; therefore, there cannot be any warranty, express or implied, w/ respect to the content or use of this plan, including but not limited to any warranty of merchantability or fitness of construction, durability, function, safety, or hazards pre- or post-construction, or any liability for any errors or omissions due to incorrect information shown on this print. Use of this print is absolutely 100% at your own risk.

THERMAL TABLE

Space	R-Value	MIN
CLG (L2)	38	
EXT WLS	16	
FLR (L2)	19	

Copyright 2003 Before The Architect
<http://www.beforethearchitect.com>
 Errors & Omissions