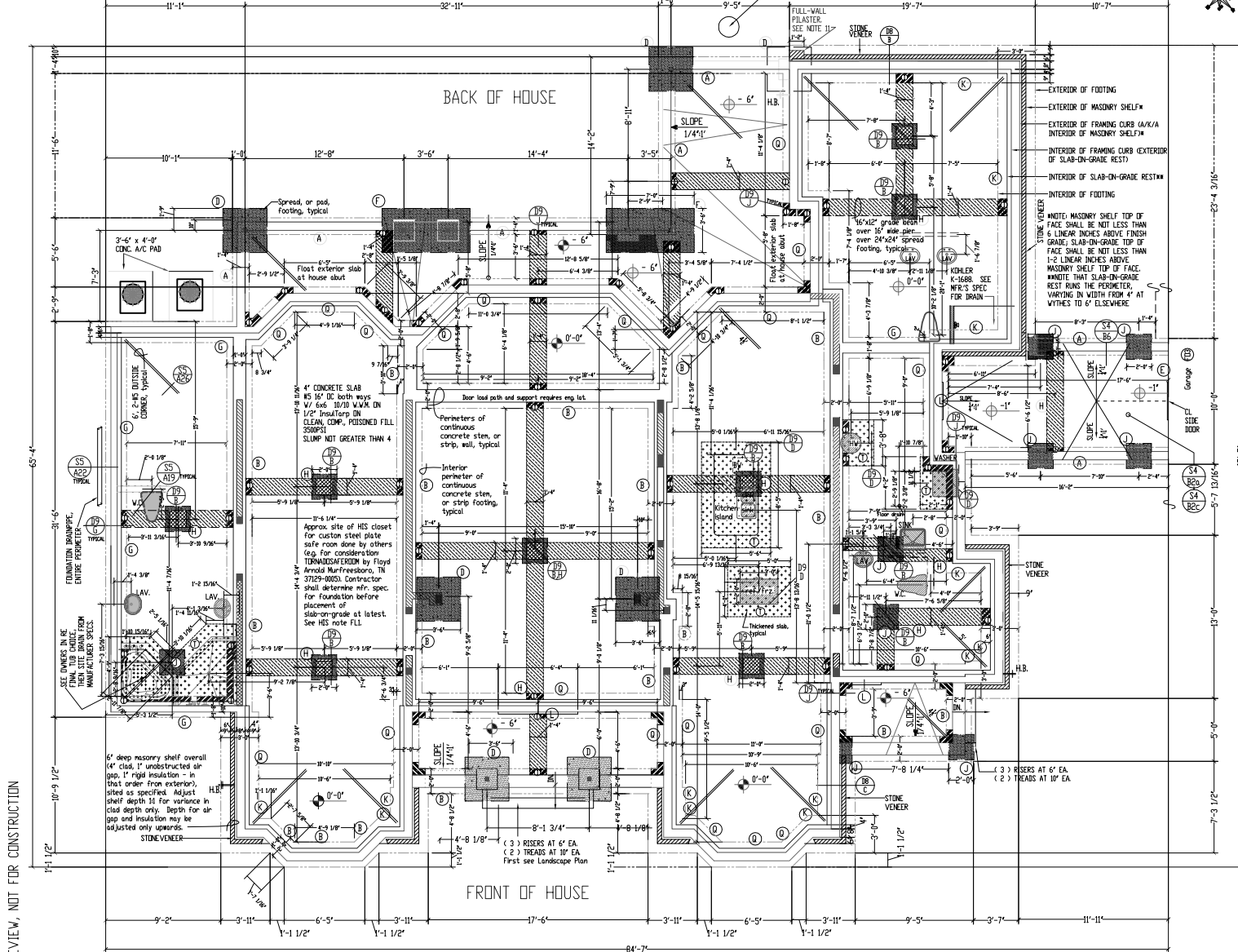


NOTE: S1-S14 SHALL APPLY

NOTE THAT THE SPIRAL STAIRCASE FOUNDATION SPECIFICATIONS SHALL BE LEFT TO THE SPIRAL STAIRCASE MANUFACTURER, EXCEPT THE FOOTING TOP OF FACE OF THE SPIRAL STAIRCASE FOUNDATION SHALL BE NOT LESS DEEP THAN THAT FOR THE HOUSE FOUNDATION FOOTING TOP OF FACE, THAT THE STAIRCASE SHALL NOT INTERSECT THE REEF, AND THAT RISERS SHALL BE CLOSED.



FOUNDATION SCHEDULE

- 1. 12" x 12" CONCRETE STRIP FOOTING, REIN. W/ 3-#5 CON. BELOW FINISH GRADE, 1" RIGID FOAM INSULATION ONLY EXTERIOR TO PERIMETER OF MASONRY VENER CLAD, AND 1/2" TO FOOTING 4" AND 6" FOR MASONRY SHELF
- 2. 24" x 24" CONCRETE STRIP FOOTING, REIN. W/ 3-#5 CON. BELOW FINISH GRADE, 1" RIGID FOAM INSULATION ONLY EXTERIOR TO PERIMETER OF MASONRY VENER CLAD, AND 1/2" TO FOOTING 4" AND 6" FOR MASONRY SHELF
- 3. 24" x 24" CONCRETE STRIP FOOTING, REIN. W/ 3-#5 CON. BELOW FINISH GRADE, 1" RIGID FOAM INSULATION ONLY EXTERIOR TO PERIMETER OF MASONRY VENER CLAD, AND 1/2" TO FOOTING 4" AND 6" FOR MASONRY SHELF
- 4. 24" x 24" CONCRETE STRIP FOOTING, REIN. W/ 3-#5 CON. BELOW FINISH GRADE, 1" RIGID FOAM INSULATION ONLY EXTERIOR TO PERIMETER OF MASONRY VENER CLAD, AND 1/2" TO FOOTING 4" AND 6" FOR MASONRY SHELF
- 5. 24" x 24" CONCRETE STRIP FOOTING, REIN. W/ 3-#5 CON. BELOW FINISH GRADE, 1" RIGID FOAM INSULATION ONLY EXTERIOR TO PERIMETER OF MASONRY VENER CLAD, AND 1/2" TO FOOTING 4" AND 6" FOR MASONRY SHELF
- 6. 24" x 24" CONCRETE STRIP FOOTING, REIN. W/ 3-#5 CON. BELOW FINISH GRADE, 1" RIGID FOAM INSULATION ONLY EXTERIOR TO PERIMETER OF MASONRY VENER CLAD, AND 1/2" TO FOOTING 4" AND 6" FOR MASONRY SHELF
- 7. 24" x 24" CONCRETE STRIP FOOTING, REIN. W/ 3-#5 CON. BELOW FINISH GRADE, 1" RIGID FOAM INSULATION ONLY EXTERIOR TO PERIMETER OF MASONRY VENER CLAD, AND 1/2" TO FOOTING 4" AND 6" FOR MASONRY SHELF
- 8. 24" x 24" CONCRETE STRIP FOOTING, REIN. W/ 3-#5 CON. BELOW FINISH GRADE, 1" RIGID FOAM INSULATION ONLY EXTERIOR TO PERIMETER OF MASONRY VENER CLAD, AND 1/2" TO FOOTING 4" AND 6" FOR MASONRY SHELF
- 9. 24" x 24" CONCRETE STRIP FOOTING, REIN. W/ 3-#5 CON. BELOW FINISH GRADE, 1" RIGID FOAM INSULATION ONLY EXTERIOR TO PERIMETER OF MASONRY VENER CLAD, AND 1/2" TO FOOTING 4" AND 6" FOR MASONRY SHELF
- 10. 24" x 24" CONCRETE STRIP FOOTING, REIN. W/ 3-#5 CON. BELOW FINISH GRADE, 1" RIGID FOAM INSULATION ONLY EXTERIOR TO PERIMETER OF MASONRY VENER CLAD, AND 1/2" TO FOOTING 4" AND 6" FOR MASONRY SHELF
- 11. 24" x 24" CONCRETE STRIP FOOTING, REIN. W/ 3-#5 CON. BELOW FINISH GRADE, 1" RIGID FOAM INSULATION ONLY EXTERIOR TO PERIMETER OF MASONRY VENER CLAD, AND 1/2" TO FOOTING 4" AND 6" FOR MASONRY SHELF
- 12. 24" x 24" CONCRETE STRIP FOOTING, REIN. W/ 3-#5 CON. BELOW FINISH GRADE, 1" RIGID FOAM INSULATION ONLY EXTERIOR TO PERIMETER OF MASONRY VENER CLAD, AND 1/2" TO FOOTING 4" AND 6" FOR MASONRY SHELF
- 13. 24" x 24" CONCRETE STRIP FOOTING, REIN. W/ 3-#5 CON. BELOW FINISH GRADE, 1" RIGID FOAM INSULATION ONLY EXTERIOR TO PERIMETER OF MASONRY VENER CLAD, AND 1/2" TO FOOTING 4" AND 6" FOR MASONRY SHELF
- 14. 24" x 24" CONCRETE STRIP FOOTING, REIN. W/ 3-#5 CON. BELOW FINISH GRADE, 1" RIGID FOAM INSULATION ONLY EXTERIOR TO PERIMETER OF MASONRY VENER CLAD, AND 1/2" TO FOOTING 4" AND 6" FOR MASONRY SHELF
- 15. 24" x 24" CONCRETE STRIP FOOTING, REIN. W/ 3-#5 CON. BELOW FINISH GRADE, 1" RIGID FOAM INSULATION ONLY EXTERIOR TO PERIMETER OF MASONRY VENER CLAD, AND 1/2" TO FOOTING 4" AND 6" FOR MASONRY SHELF
- 16. 24" x 24" CONCRETE STRIP FOOTING, REIN. W/ 3-#5 CON. BELOW FINISH GRADE, 1" RIGID FOAM INSULATION ONLY EXTERIOR TO PERIMETER OF MASONRY VENER CLAD, AND 1/2" TO FOOTING 4" AND 6" FOR MASONRY SHELF
- 17. 24" x 24" CONCRETE STRIP FOOTING, REIN. W/ 3-#5 CON. BELOW FINISH GRADE, 1" RIGID FOAM INSULATION ONLY EXTERIOR TO PERIMETER OF MASONRY VENER CLAD, AND 1/2" TO FOOTING 4" AND 6" FOR MASONRY SHELF
- 18. 24" x 24" CONCRETE STRIP FOOTING, REIN. W/ 3-#5 CON. BELOW FINISH GRADE, 1" RIGID FOAM INSULATION ONLY EXTERIOR TO PERIMETER OF MASONRY VENER CLAD, AND 1/2" TO FOOTING 4" AND 6" FOR MASONRY SHELF
- 19. 24" x 24" CONCRETE STRIP FOOTING, REIN. W/ 3-#5 CON. BELOW FINISH GRADE, 1" RIGID FOAM INSULATION ONLY EXTERIOR TO PERIMETER OF MASONRY VENER CLAD, AND 1/2" TO FOOTING 4" AND 6" FOR MASONRY SHELF
- 20. 24" x 24" CONCRETE STRIP FOOTING, REIN. W/ 3-#5 CON. BELOW FINISH GRADE, 1" RIGID FOAM INSULATION ONLY EXTERIOR TO PERIMETER OF MASONRY VENER CLAD, AND 1/2" TO FOOTING 4" AND 6" FOR MASONRY SHELF
- 21. 24" x 24" CONCRETE STRIP FOOTING, REIN. W/ 3-#5 CON. BELOW FINISH GRADE, 1" RIGID FOAM INSULATION ONLY EXTERIOR TO PERIMETER OF MASONRY VENER CLAD, AND 1/2" TO FOOTING 4" AND 6" FOR MASONRY SHELF
- 22. 24" x 24" CONCRETE STRIP FOOTING, REIN. W/ 3-#5 CON. BELOW FINISH GRADE, 1" RIGID FOAM INSULATION ONLY EXTERIOR TO PERIMETER OF MASONRY VENER CLAD, AND 1/2" TO FOOTING 4" AND 6" FOR MASONRY SHELF
- 23. 24" x 24" CONCRETE STRIP FOOTING, REIN. W/ 3-#5 CON. BELOW FINISH GRADE, 1" RIGID FOAM INSULATION ONLY EXTERIOR TO PERIMETER OF MASONRY VENER CLAD, AND 1/2" TO FOOTING 4" AND 6" FOR MASONRY SHELF
- 24. 24" x 24" CONCRETE STRIP FOOTING, REIN. W/ 3-#5 CON. BELOW FINISH GRADE, 1" RIGID FOAM INSULATION ONLY EXTERIOR TO PERIMETER OF MASONRY VENER CLAD, AND 1/2" TO FOOTING 4" AND 6" FOR MASONRY SHELF
- 25. 24" x 24" CONCRETE STRIP FOOTING, REIN. W/ 3-#5 CON. BELOW FINISH GRADE, 1" RIGID FOAM INSULATION ONLY EXTERIOR TO PERIMETER OF MASONRY VENER CLAD, AND 1/2" TO FOOTING 4" AND 6" FOR MASONRY SHELF
- 26. 24" x 24" CONCRETE STRIP FOOTING, REIN. W/ 3-#5 CON. BELOW FINISH GRADE, 1" RIGID FOAM INSULATION ONLY EXTERIOR TO PERIMETER OF MASONRY VENER CLAD, AND 1/2" TO FOOTING 4" AND 6" FOR MASONRY SHELF
- 27. 24" x 24" CONCRETE STRIP FOOTING, REIN. W/ 3-#5 CON. BELOW FINISH GRADE, 1" RIGID FOAM INSULATION ONLY EXTERIOR TO PERIMETER OF MASONRY VENER CLAD, AND 1/2" TO FOOTING 4" AND 6" FOR MASONRY SHELF
- 28. 24" x 24" CONCRETE STRIP FOOTING, REIN. W/ 3-#5 CON. BELOW FINISH GRADE, 1" RIGID FOAM INSULATION ONLY EXTERIOR TO PERIMETER OF MASONRY VENER CLAD, AND 1/2" TO FOOTING 4" AND 6" FOR MASONRY SHELF
- 29. 24" x 24" CONCRETE STRIP FOOTING, REIN. W/ 3-#5 CON. BELOW FINISH GRADE, 1" RIGID FOAM INSULATION ONLY EXTERIOR TO PERIMETER OF MASONRY VENER CLAD, AND 1/2" TO FOOTING 4" AND 6" FOR MASONRY SHELF
- 30. 24" x 24" CONCRETE STRIP FOOTING, REIN. W/ 3-#5 CON. BELOW FINISH GRADE, 1" RIGID FOAM INSULATION ONLY EXTERIOR TO PERIMETER OF MASONRY VENER CLAD, AND 1/2" TO FOOTING 4" AND 6" FOR MASONRY SHELF
- 31. 24" x 24" CONCRETE STRIP FOOTING, REIN. W/ 3-#5 CON. BELOW FINISH GRADE, 1" RIGID FOAM INSULATION ONLY EXTERIOR TO PERIMETER OF MASONRY VENER CLAD, AND 1/2" TO FOOTING 4" AND 6" FOR MASONRY SHELF
- 32. 24" x 24" CONCRETE STRIP FOOTING, REIN. W/ 3-#5 CON. BELOW FINISH GRADE, 1" RIGID FOAM INSULATION ONLY EXTERIOR TO PERIMETER OF MASONRY VENER CLAD, AND 1/2" TO FOOTING 4" AND 6" FOR MASONRY SHELF
- 33. 24" x 24" CONCRETE STRIP FOOTING, REIN. W/ 3-#5 CON. BELOW FINISH GRADE, 1" RIGID FOAM INSULATION ONLY EXTERIOR TO PERIMETER OF MASONRY VENER CLAD, AND 1/2" TO FOOTING 4" AND 6" FOR MASONRY SHELF
- 34. 24" x 24" CONCRETE STRIP FOOTING, REIN. W/ 3-#5 CON. BELOW FINISH GRADE, 1" RIGID FOAM INSULATION ONLY EXTERIOR TO PERIMETER OF MASONRY VENER CLAD, AND 1/2" TO FOOTING 4" AND 6" FOR MASONRY SHELF
- 35. 24" x 24" CONCRETE STRIP FOOTING, REIN. W/ 3-#5 CON. BELOW FINISH GRADE, 1" RIGID FOAM INSULATION ONLY EXTERIOR TO PERIMETER OF MASONRY VENER CLAD, AND 1/2" TO FOOTING 4" AND 6" FOR MASONRY SHELF
- 36. 24" x 24" CONCRETE STRIP FOOTING, REIN. W/ 3-#5 CON. BELOW FINISH GRADE, 1" RIGID FOAM INSULATION ONLY EXTERIOR TO PERIMETER OF MASONRY VENER CLAD, AND 1/2" TO FOOTING 4" AND 6" FOR MASONRY SHELF
- 37. 24" x 24" CONCRETE STRIP FOOTING, REIN. W/ 3-#5 CON. BELOW FINISH GRADE, 1" RIGID FOAM INSULATION ONLY EXTERIOR TO PERIMETER OF MASONRY VENER CLAD, AND 1/2" TO FOOTING 4" AND 6" FOR MASONRY SHELF
- 38. 24" x 24" CONCRETE STRIP FOOTING, REIN. W/ 3-#5 CON. BELOW FINISH GRADE, 1" RIGID FOAM INSULATION ONLY EXTERIOR TO PERIMETER OF MASONRY VENER CLAD, AND 1/2" TO FOOTING 4" AND 6" FOR MASONRY SHELF
- 39. 24" x 24" CONCRETE STRIP FOOTING, REIN. W/ 3-#5 CON. BELOW FINISH GRADE, 1" RIGID FOAM INSULATION ONLY EXTERIOR TO PERIMETER OF MASONRY VENER CLAD, AND 1/2" TO FOOTING 4" AND 6" FOR MASONRY SHELF
- 40. 24" x 24" CONCRETE STRIP FOOTING, REIN. W/ 3-#5 CON. BELOW FINISH GRADE, 1" RIGID FOAM INSULATION ONLY EXTERIOR TO PERIMETER OF MASONRY VENER CLAD, AND 1/2" TO FOOTING 4" AND 6" FOR MASONRY SHELF
- 41. 24" x 24" CONCRETE STRIP FOOTING, REIN. W/ 3-#5 CON. BELOW FINISH GRADE, 1" RIGID FOAM INSULATION ONLY EXTERIOR TO PERIMETER OF MASONRY VENER CLAD, AND 1/2" TO FOOTING 4" AND 6" FOR MASONRY SHELF
- 42. 24" x 24" CONCRETE STRIP FOOTING, REIN. W/ 3-#5 CON. BELOW FINISH GRADE, 1" RIGID FOAM INSULATION ONLY EXTERIOR TO PERIMETER OF MASONRY VENER CLAD, AND 1/2" TO FOOTING 4" AND 6" FOR MASONRY SHELF
- 43. 24" x 24" CONCRETE STRIP FOOTING, REIN. W/ 3-#5 CON. BELOW FINISH GRADE, 1" RIGID FOAM INSULATION ONLY EXTERIOR TO PERIMETER OF MASONRY VENER CLAD, AND 1/2" TO FOOTING 4" AND 6" FOR MASONRY SHELF
- 44. 24" x 24" CONCRETE STRIP FOOTING, REIN. W/ 3-#5 CON. BELOW FINISH GRADE, 1" RIGID FOAM INSULATION ONLY EXTERIOR TO PERIMETER OF MASONRY VENER CLAD, AND 1/2" TO FOOTING 4" AND 6" FOR MASONRY SHELF
- 45. 24" x 24" CONCRETE STRIP FOOTING, REIN. W/ 3-#5 CON. BELOW FINISH GRADE, 1" RIGID FOAM INSULATION ONLY EXTERIOR TO PERIMETER OF MASONRY VENER CLAD, AND 1/2" TO FOOTING 4" AND 6" FOR MASONRY SHELF
- 46. 24" x 24" CONCRETE STRIP FOOTING, REIN. W/ 3-#5 CON. BELOW FINISH GRADE, 1" RIGID FOAM INSULATION ONLY EXTERIOR TO PERIMETER OF MASONRY VENER CLAD, AND 1/2" TO FOOTING 4" AND 6" FOR MASONRY SHELF
- 47. 24" x 24" CONCRETE STRIP FOOTING, REIN. W/ 3-#5 CON. BELOW FINISH GRADE, 1" RIGID FOAM INSULATION ONLY EXTERIOR TO PERIMETER OF MASONRY VENER CLAD, AND 1/2" TO FOOTING 4" AND 6" FOR MASONRY SHELF
- 48. 24" x 24" CONCRETE STRIP FOOTING, REIN. W/ 3-#5 CON. BELOW FINISH GRADE, 1" RIGID FOAM INSULATION ONLY EXTERIOR TO PERIMETER OF MASONRY VENER CLAD, AND 1/2" TO FOOTING 4" AND 6" FOR MASONRY SHELF
- 49. 24" x 24" CONCRETE STRIP FOOTING, REIN. W/ 3-#5 CON. BELOW FINISH GRADE, 1" RIGID FOAM INSULATION ONLY EXTERIOR TO PERIMETER OF MASONRY VENER CLAD, AND 1/2" TO FOOTING 4" AND 6" FOR MASONRY SHELF
- 50. 24" x 24" CONCRETE STRIP FOOTING, REIN. W/ 3-#5 CON. BELOW FINISH GRADE, 1" RIGID FOAM INSULATION ONLY EXTERIOR TO PERIMETER OF MASONRY VENER CLAD, AND 1/2" TO FOOTING 4" AND 6" FOR MASONRY SHELF
- 51. 24" x 24" CONCRETE STRIP FOOTING, REIN. W/ 3-#5 CON. BELOW FINISH GRADE, 1" RIGID FOAM INSULATION ONLY EXTERIOR TO PERIMETER OF MASONRY VENER CLAD, AND 1/2" TO FOOTING 4" AND 6" FOR MASONRY SHELF
- 52. 24" x 24" CONCRETE STRIP FOOTING, REIN. W/ 3-#5 CON. BELOW FINISH GRADE, 1" RIGID FOAM INSULATION ONLY EXTERIOR TO PERIMETER OF MASONRY VENER CLAD, AND 1/2" TO FOOTING 4" AND 6" FOR MASONRY SHELF
- 53. 24" x 24" CONCRETE STRIP FOOTING, REIN. W/ 3-#5 CON. BELOW FINISH GRADE, 1" RIGID FOAM INSULATION ONLY EXTERIOR TO PERIMETER OF MASONRY VENER CLAD, AND 1/2" TO FOOTING 4" AND 6" FOR MASONRY SHELF
- 54. 24" x 24" CONCRETE STRIP FOOTING, REIN. W/ 3-#5 CON. BELOW FINISH GRADE, 1" RIGID FOAM INSULATION ONLY EXTERIOR TO PERIMETER OF MASONRY VENER CLAD, AND 1/2" TO FOOTING 4" AND 6" FOR MASONRY SHELF
- 55. 24" x 24" CONCRETE STRIP FOOTING, REIN. W/ 3-#5 CON. BELOW FINISH GRADE, 1" RIGID FOAM INSULATION ONLY EXTERIOR TO PERIMETER OF MASONRY VENER CLAD, AND 1/2" TO FOOTING 4" AND 6" FOR MASONRY SHELF
- 56. 24" x 24" CONCRETE STRIP FOOTING, REIN. W/ 3-#5 CON. BELOW FINISH GRADE, 1" RIGID FOAM INSULATION ONLY EXTERIOR TO PERIMETER OF MASONRY VENER CLAD, AND 1/2" TO FOOTING 4" AND 6" FOR MASONRY SHELF
- 57. 24" x 24" CONCRETE STRIP FOOTING, REIN. W/ 3-#5 CON. BELOW FINISH GRADE, 1" RIGID FOAM INSULATION ONLY EXTERIOR TO PERIMETER OF MASONRY VENER CLAD, AND 1/2" TO FOOTING 4" AND 6" FOR MASONRY SHELF
- 58. 24" x 24" CONCRETE STRIP FOOTING, REIN. W/ 3-#5 CON. BELOW FINISH GRADE, 1" RIGID FOAM INSULATION ONLY EXTERIOR TO PERIMETER OF MASONRY VENER CLAD, AND 1/2" TO FOOTING 4" AND 6" FOR MASONRY SHELF
- 59. 24" x 24" CONCRETE STRIP FOOTING, REIN. W/ 3-#5 CON. BELOW FINISH GRADE, 1" RIGID FOAM INSULATION ONLY EXTERIOR TO PERIMETER OF MASONRY VENER CLAD, AND 1/2" TO FOOTING 4" AND 6" FOR MASONRY SHELF
- 60. 24" x 24" CONCRETE STRIP FOOTING, REIN. W/ 3-#5 CON. BELOW FINISH GRADE, 1" RIGID FOAM INSULATION ONLY EXTERIOR TO PERIMETER OF MASONRY VENER CLAD, AND 1/2" TO FOOTING 4" AND 6" FOR MASONRY SHELF
- 61. 24" x 24" CONCRETE STRIP FOOTING, REIN. W/ 3-#5 CON. BELOW FINISH GRADE, 1" RIGID FOAM INSULATION ONLY EXTERIOR TO PERIMETER OF MASONRY VENER CLAD, AND 1/2" TO FOOTING 4" AND 6" FOR MASONRY SHELF
- 62. 24" x 24" CONCRETE STRIP FOOTING, REIN. W/ 3-#5 CON. BELOW FINISH GRADE, 1" RIGID FOAM INSULATION ONLY EXTERIOR TO PERIMETER OF MASONRY VENER CLAD, AND 1/2" TO FOOTING 4" AND 6" FOR MASONRY SHELF
- 63. 24" x 24" CONCRETE STRIP FOOTING, REIN. W/ 3-#5 CON. BELOW FINISH GRADE, 1" RIGID FOAM INSULATION ONLY EXTERIOR TO PERIMETER OF MASONRY VENER CLAD, AND 1/2" TO FOOTING 4" AND 6" FOR MASONRY SHELF
- 64. 24" x 24" CONCRETE STRIP FOOTING, REIN. W/ 3-#5 CON. BELOW FINISH GRADE, 1" RIGID FOAM INSULATION ONLY EXTERIOR TO PERIMETER OF MASONRY VENER CLAD, AND 1/2" TO FOOTING 4" AND 6" FOR MASONRY SHELF
- 65. 24" x 24" CONCRETE STRIP FOOTING, REIN. W/ 3-#5 CON. BELOW FINISH GRADE, 1" RIGID FOAM INSULATION ONLY EXTERIOR TO PERIMETER OF MASONRY VENER CLAD, AND 1/2" TO FOOTING 4" AND 6" FOR MASONRY SHELF
- 66. 24" x 24" CONCRETE STRIP FOOTING, REIN. W/ 3-#5 CON. BELOW FINISH GRADE, 1" RIGID FOAM INSULATION ONLY EXTERIOR TO PERIMETER OF MASONRY VENER CLAD, AND 1/2" TO FOOTING 4" AND 6" FOR MASONRY SHELF
- 67. 24" x 24" CONCRETE STRIP FOOTING, REIN. W/ 3-#5 CON. BELOW FINISH GRADE, 1" RIGID FOAM INSULATION ONLY EXTERIOR TO PERIMETER OF MASONRY VENER CLAD, AND 1/2" TO FOOTING 4" AND 6" FOR MASONRY SHELF
- 68. 24" x 24" CONCRETE STRIP FOOTING, REIN. W/ 3-#5 CON. BELOW FINISH GRADE, 1" RIGID FOAM INSULATION ONLY EXTERIOR TO PERIMETER OF MASONRY VENER CLAD, AND 1/2" TO FOOTING 4" AND 6" FOR MASONRY SHELF
- 69. 24" x 24" CONCRETE STRIP FOOTING, REIN. W/ 3-#5 CON. BELOW FINISH GRADE, 1" RIGID FOAM INSULATION ONLY EXTERIOR TO PERIMETER OF MASONRY VENER CLAD, AND 1/2" TO FOOTING 4" AND 6" FOR MASONRY SHELF
- 70. 24" x 24" CONCRETE STRIP FOOTING, REIN. W/ 3-#5 CON. BELOW FINISH GRADE, 1" RIGID FOAM INSULATION ONLY EXTERIOR TO PERIMETER OF MASONRY VENER CLAD, AND 1/2" TO FOOTING 4" AND 6" FOR MASONRY SHELF
- 71. 24" x 24" CONCRETE STRIP FOOTING, REIN. W/ 3-#5 CON. BELOW FINISH GRADE, 1" RIGID FOAM INSULATION ONLY EXTERIOR TO PERIMETER OF MASONRY VENER CLAD, AND 1/2" TO FOOTING 4" AND 6" FOR MASONRY SHELF
- 72. 24" x 24" CONCRETE STRIP FOOTING, REIN. W/ 3-#5 CON. BELOW FINISH GRADE, 1" RIGID FOAM INSULATION ONLY EXTERIOR TO PERIMETER OF MASONRY VENER CLAD, AND 1/2" TO FOOTING 4" AND 6" FOR MASONRY SHELF
- 73. 24" x 24" CONCRETE STRIP FOOTING, REIN. W/ 3-#5 CON. BELOW FINISH GRADE, 1" RIGID FOAM INSULATION ONLY EXTERIOR TO PERIMETER OF MASONRY VENER CLAD, AND 1/2" TO FOOTING 4" AND 6" FOR MASONRY SHELF
- 74. 24" x 24" CONCRETE STRIP FOOTING, REIN. W/ 3-#5 CON. BELOW FINISH GRADE, 1" RIGID FOAM INSULATION ONLY EXTERIOR TO PERIMETER OF MASONRY VENER CLAD, AND 1/2" TO FOOTING 4" AND 6" FOR MASONRY SHELF
- 75. 24" x 24" CONCRETE STRIP FOOTING, REIN. W/ 3-#5 CON. BELOW FINISH GRADE, 1" RIGID FOAM INSULATION ONLY EXTERIOR TO PERIMETER OF MASONRY VENER CLAD, AND 1/2" TO FOOTING 4" AND 6" FOR MASONRY SHELF
- 76. 24" x 24" CONCRETE STRIP FOOTING, REIN. W/ 3-#5 CON. BELOW FINISH GRADE, 1" RIGID FOAM INSULATION ONLY EXTERIOR TO PERIMETER OF MASONRY VENER CLAD, AND 1/2" TO FOOTING 4" AND 6" FOR MASONRY SHELF
- 77. 24" x 24" CONCRETE STRIP FOOTING, REIN. W/ 3-#5 CON. BELOW FINISH GRADE, 1" RIGID FOAM INSULATION ONLY EXTERIOR TO PERIMETER OF MASONRY VENER CLAD, AND 1/2" TO FOOTING 4" AND 6" FOR MASONRY SHELF
- 78. 24" x 24" CONCRETE STRIP FOOTING, REIN. W/ 3-#5 CON. BELOW FINISH GRADE, 1" RIGID FOAM INSULATION ONLY EXTERIOR TO PERIMETER OF MASONRY VENER CLAD, AND 1/2" TO FOOTING 4" AND 6" FOR MASONRY SHELF
- 79. 24" x 24" CONCRETE STRIP FOOTING, REIN. W/ 3-#5 CON. BELOW FINISH GRADE, 1" RIGID FOAM INSULATION ONLY EXTERIOR TO PERIMETER OF MASONRY VENER CLAD, AND 1/2" TO FOOTING 4" AND 6" FOR MASONRY SHELF
- 80. 24" x 24" CONCRETE STRIP FOOTING, REIN. W/ 3-#5 CON. BELOW FINISH GRADE, 1" RIGID FOAM INSULATION ONLY EXTERIOR TO PERIMETER OF MASONRY VENER CLAD, AND 1/2" TO FOOTING 4" AND 6" FOR MASONRY SHELF
- 81. 24" x 24" CONCRETE STRIP FOOTING, REIN. W/ 3-#5 CON. BELOW FINISH GRADE, 1" RIGID FOAM INSULATION ONLY EXTERIOR TO PERIMETER OF MASONRY VENER CLAD, AND 1/2" TO FOOTING 4" AND 6" FOR MASONRY SHELF
- 82. 24" x 24" CONCRETE STRIP FOOTING, REIN. W/ 3-#5 CON. BELOW FINISH GRADE, 1" RIGID FOAM INSULATION ONLY EXTERIOR TO PERIMETER OF MASONRY VENER CLAD, AND 1/2" TO FOOTING 4" AND 6" FOR MASONRY SHELF
- 83. 24" x 24" CONCRETE STRIP FOOTING, REIN. W/ 3-#5 CON. BELOW FINISH GRADE, 1" RIGID FOAM INSULATION ONLY EXTERIOR TO PERIMETER OF MASONRY VENER CLAD, AND 1/2" TO FOOTING 4" AND 6" FOR MASONRY SHELF
- 84. 24" x 24" CONCRETE STRIP FOOTING, REIN. W/ 3-#5 CON. BELOW FINISH GRADE, 1" RIGID FOAM INSULATION ONLY EXTERIOR TO PERIMETER OF MASONRY VENER CLAD, AND 1/2" TO FOOTING 4" AND 6" FOR MASONRY SHELF
- 85. 24" x 24" CONCRETE STRIP FOOTING, REIN. W/ 3-#5 CON. BELOW FINISH GRADE, 1" RIGID FOAM INSULATION ONLY EXTERIOR TO PERIMETER OF MASONRY VENER CLAD, AND 1/2" TO FOOTING 4" AND 6" FOR MASONRY SHELF
- 86. 24" x 24" CONCRETE STRIP FOOTING, REIN. W/ 3-#5 CON. BELOW FINISH GRADE, 1" RIGID FOAM INSULATION ONLY EXTERIOR TO PERIMETER OF MASONRY VENER CLAD, AND 1/2" TO FOOTING 4" AND 6" FOR MASONRY SHELF
- 87. 24" x 24" CONCRETE STRIP FOOTING, REIN. W/ 3-#5 CON. BELOW FINISH GRADE, 1" RIGID FOAM INSULATION ONLY EXTERIOR TO PERIMETER OF MASONRY VENER CLAD, AND 1/2" TO FOOTING 4" AND 6" FOR MASONRY SHELF
- 88. 24" x 24" CONCRETE STRIP FOOTING, REIN. W/ 3-#5 CON. BELOW FINISH GRADE, 1" RIGID FOAM INSULATION ONLY EXTERIOR TO PERIMETER OF MASONRY VENER CLAD, AND 1/2" TO FOOTING 4" AND 6" FOR MASONRY SHELF
- 89. 24" x 24" CONCRETE STRIP FOOTING, REIN. W/ 3-#5 CON. BELOW FINISH GRADE, 1" RIGID FOAM INSULATION ONLY EXTERIOR TO PERIMETER OF MASONRY VENER CLAD, AND 1/2" TO FOOTING 4" AND 6" FOR MASONRY SHELF
- 90. 24" x 24" CONCRETE STRIP FOOTING, REIN. W/ 3-#5 CON. BELOW FINISH GRADE, 1" RIGID FOAM INSULATION ONLY EXTERIOR TO PERIMETER OF MASONRY VENER CLAD, AND 1/2" TO FOOTING 4" AND 6" FOR MASONRY SHELF
- 91. 24" x 24" CONCRETE STRIP FOOTING, REIN. W/ 3-#5 CON. BELOW FINISH GRADE, 1" RIGID FOAM INSULATION ONLY EXTERIOR TO PERIMETER OF MASONRY VENER CLAD, AND 1/2" TO FOOTING 4" AND 6" FOR MASONRY SHELF
- 92. 24" x 24" CONCRETE STRIP FOOTING, REIN. W/ 3-#5 CON. BELOW FINISH GRADE, 1" RIGID FOAM INSULATION ONLY EXTERIOR TO PERIMETER OF MASONRY VENER CLAD, AND 1/2" TO FOOTING 4" AND 6" FOR MASONRY SHELF
- 93. 24" x 24" CONCRETE STRIP FOOTING, REIN. W/ 3-#5 CON. BELOW FINISH GRADE, 1" RIGID FOAM INSULATION ONLY EXTERIOR TO PERIMETER OF MASONRY VENER CLAD, AND 1/2" TO FOOTING 4" AND 6" FOR MASONRY SHELF
- 94. 24" x 24" CONCRETE STRIP FOOTING, REIN. W/ 3-#5 CON. BELOW FINISH GRADE, 1" RIGID FOAM INSULATION ONLY EXTERIOR TO PERIMETER OF MASONRY VENER CLAD, AND 1/2" TO FOOTING 4" AND 6" FOR MASONRY SHELF
- 95. 24" x 24" CONCRETE STRIP FOOTING, REIN. W/ 3-#5 CON. BELOW FINISH GRADE, 1" RIGID FOAM INSULATION ONLY EXTERIOR TO PERIMETER OF MASONRY VENER CLAD, AND 1/2" TO FOOTING 4" AND 6" FOR MASONRY SHELF
- 96. 24" x 24" CONCRETE STRIP FOOTING, REIN. W/ 3-#5 CON. BELOW FINISH GRADE, 1" RIGID FOAM INSULATION ONLY EXTERIOR TO PERIMETER OF MASONRY VENER CLAD, AND 1/2" TO FOOTING 4" AND 6" FOR MASONRY SHELF
- 97. 24" x 24" CONCRETE STRIP FOOTING, REIN. W/ 3-#5 CON. BELOW FINISH GRADE, 1" RIGID FOAM INSULATION ONLY EXTERIOR TO PERIMETER OF MASONRY VENER CLAD, AND 1/2" TO FOOTING 4" AND 6" FOR MASONRY SHELF
- 98. 24" x 24" CONCRETE STRIP FOOTING, REIN. W/ 3-#5 CON. BELOW FINISH GRADE, 1" RIGID FOAM INSULATION ONLY EXTERIOR TO PERIMETER OF MASONRY VENER CLAD, AND 1/2" TO FOOTING 4" AND 6" FOR MASONRY SHELF
- 99. 24" x 24" CONCRETE STRIP FOOTING, REIN. W/ 3-#5 CON. BELOW FINISH GRADE, 1" RIGID FOAM INSULATION ONLY EXTERIOR TO PERIMETER OF MASONRY VENER CLAD, AND 1/2" TO FOOTING 4" AND 6" FOR MASONRY SHELF
- 100. 24" x 24" CONCRETE STRIP FOOTING, REIN. W/ 3-#5 CON. BELOW FINISH GRADE, 1" RIGID FOAM INSULATION ONLY EXTERIOR TO PERIMETER OF MASONRY VENER CLAD, AND 1/2" TO FOOTING 4" AND 6" FOR MASONRY SHELF

CONTRACTORS SHALL BE RESPONSIBLE FOR APPLICATION OF SPECIFICATION HEREIN UNDER PARTICULARS OF FOUNDATIONS S4-6. SELECTED REFERENCES ARE OFFERED HERewith

- RE ANCHOR BELTS AND OTHER FASTENERS
- RE GENERAL
- RE SLAB-ON-GRADE
- RE MASONRY SHELF
- RE GRADE BEAM
- RE STRIP FOOTING
- RE TURNDOWN FOOTING
- RE SPREAD FOOTING
- RE CON FOUNDATION
- CLOSED-CELL INSULATION
- RE TERMITE PROTECT
- RE FOOTING BRAN
- RE THICKENED SLAB
- RE WALL OPENING REINFORCEMENT
- RE FITCHES
- RE JOINTS
- RE WYTHE

NOTE: 1. Not less than 4" rest is assumed for the residential slab on grade along the entirety of its perimeter. In order to assure a thermal break of slab to foundation perimeter, wide swathing rigid foam board insulation on exterior faces of the foundation. 2. In the REVISIONS AND BELTS OVERLAP BELTS SHALL BE SET TO NOT LESS THAN 1" MINUS WITH SUFFICIENT EXPOSURE TO HELL DOWN A DOUBLE SOLI PLATE OR DOUBLE INSULATED WOOD STRIP FLOOR FLOOR HOLD UP BEP-ND FINISH MASONRY FLOORING SHALL BE APPLIED, RAISING THE FINISH FLOOR TOP OF FACE OF APPROXIMATELY OVER DOUBLE SLAB-ON-GRADE TOP OF FACE. 3. (U) Foundation supports assume 6" reveal of Footing 12" side wall for platform frame and slab-on-grade rest plate of masonry shelf for 4" depth from clad plate 1" air gap plus 1" rigid foam board insulation. 4. Footings shall be not less than the deeper of all local code or a) the top face of footings not above the local code. b) 12" depth. 5. Joints shall be filled smooth and to full depth with an elastomeric joint sealant, in accordance with the manufacturer's instructions. 6. The 2-#8 rebars angled at outside corners on the exterior shall be rebar-reinforced. 7. Exterior stairs or steps = 4. If more than 4 risers, then shall have a handrail on at least one side 34" OC over the more forward of front of rear or rising and in-line with rise; it shall have only closed risers; c shall have a handrail on both sides if width is greater than 48"; it shall have equal-height risers not greater than 4 1/2 and equal-depth treads not less than 10 1/2. See owners re rebar. 8. Finish stone clad assume 1" rigid foam insulation + 1" air gap + 1" masonry material = 6" total depth. 9. Create beam butts to each other and to slab-on-grade shall be interconnected with rebar lapped not less than 48 diameters and to the outside only. 10. Found footings and walls to exterior stairs based on Landscape Plan done by others. 11. Lay full-wall plaster stone or authentic plaster, i.e., exposed terminal face shall be stone stone, not layered over single wall. Contractor shall assure continuous moisture impermeable barrier at plaster abut to structure.

Project: Hacienda H
 Clients: [blank]
 Date: June 19, 2005

Disclaimer: Before The Architect has exercised great effort and care in the preparation of this plan design and the completion of these construction drawings. However, others will provide independent, at-a-distance, and on-site consulting, supervision and construction control of materials and methods, and no one on the project in this project. Therefore, before the Architect cannot assume responsibility for any errors or omissions in this project. The Architect's liability is limited to the contract or use of this plan. The Architect cannot be held liable for any warranty, express or implied, with respect to the contract or use of this plan, including but not limited to any warranty of merchantability or fitness of construction, durability, function, safety, or hazards pre- or post-construction, or any liability for any errors or omissions due to incorrect information shown on this print. Use of this print is absolutely 100% at your own risk.

A Sater Design Collection Plan
 Modified U/A by
BEFORE THE ARCHITECT
<http://www.beforethearchitect.com>

F001

FOUNDATION PLAN, HOUSE AND BREEZEWAY LAYOUT SCALE: 1/4" = 1'-0"

FOR REVIEW, NOT FOR CONSTRUCTION