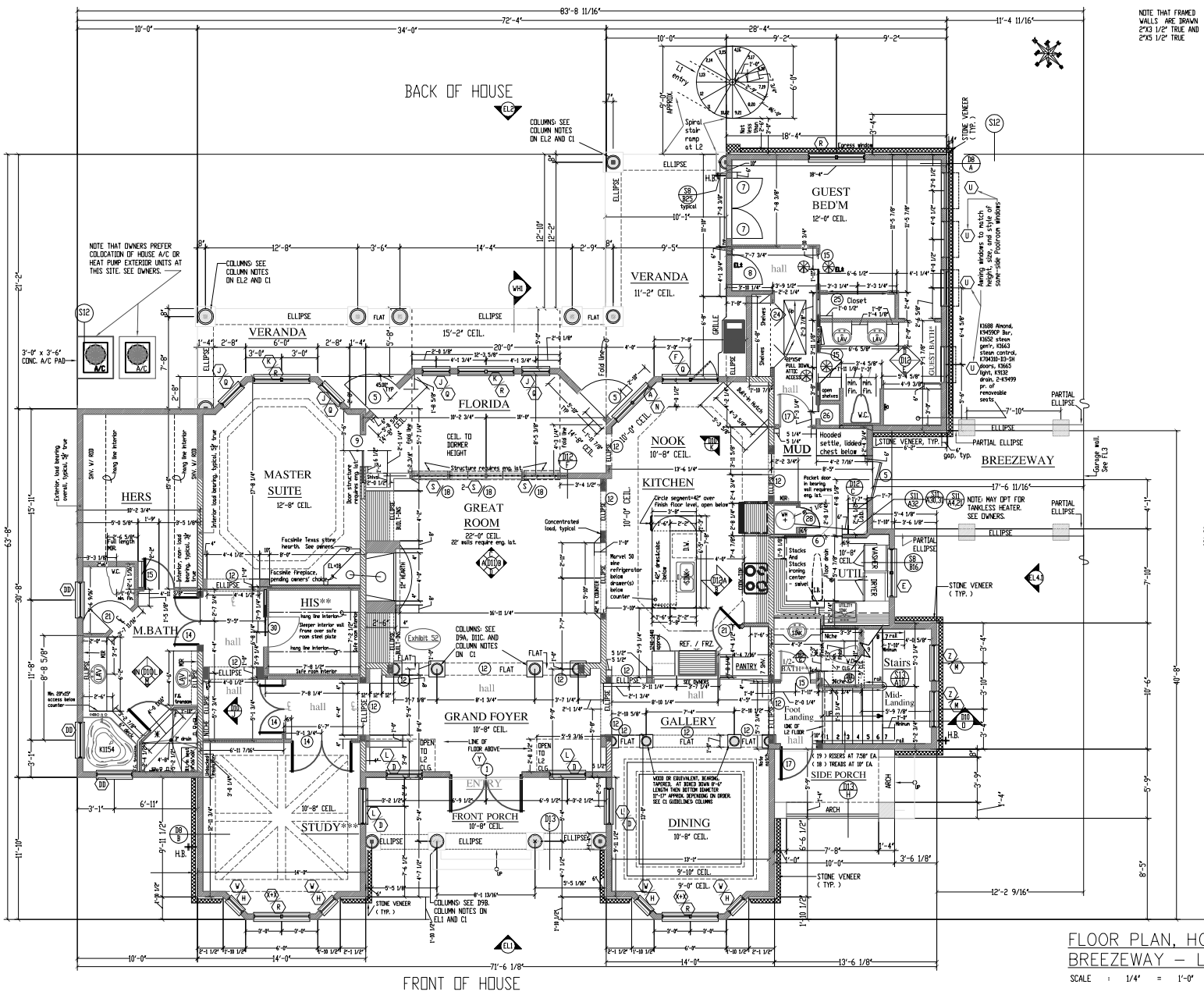


NOTE: S1-S14 SHALL APPLY

NOTE THAT FRAMED WALLS ARE DRAWN 2X3 1/2" TRUE AND 2X5 1/2" TRUE



FOR REVIEW, NOT FOR CONSTRUCTION

* SHOWER RECEPTOR MAY BE CONTRACTED TO PAINT MIDDLE FABRICATOR
 * HANG CLOSET CONTRACTOR SHALL ATTEND CLOSELY TO NOT LESS THAN INTERIOR DIMENSION OF 7'-2 1/2" SIDE TO SIDE IN CASE KERN W/ 2" SLEEPERS ON INTERIOR SIDE TO STEEL PLATE. SEE FN NOTE ON HIS CLOSET SITE.
 * HANGING UNDOUBTED INSULATION FOR MESH ADHESION SHALL BE APPLIED IN STUDY AND 1/2-BATH WALL STUD BAYS, MOUNTING INTERIOR SPACE

NOTE THAT OWNERS PREFER COLLOCATION OF HOUSE A/C OR HEAT PUMP EXTERIOR UNITS AT THIS SITE. SEE OWNERS.

FLOOR PLAN, HOUSE & BREEZEWAY - L1
 SCALE : 1/4" = 1'-0"

Title: FLOOR PLAN
 Project: Hacienda H
 For: Clients
 Date: June 19, 2005

Disclaimer: Before The Architect has exercised great effort and care in the production of this home design and the completion of these construction drawings. However, others will provide materials, and no at-distance, and on-site consulting, supervision and construction control of materials and methods, and one on the planet can ever possibly attest to the knowledge of all local codes, needs, and requirements to be effected in this project. Therefore, before the Architect cannot assume responsibility for any design errors, omissions, or omissions. The Architect does not warrant, represent, or hold any liability, including but not limited to any warranty of merchantability or fitness of construction, durability, function, safety, or hazards pre- or post-construction, or any liability for any errors or omissions due to incorrect information shown on this print. Use of this print is absolutely 100% at your own risk.

A Sater Design Collection Plan
 Modified U/A by
 BEFORE THE ARCHITECT
<http://www.beforethearchitect.com>

FL1