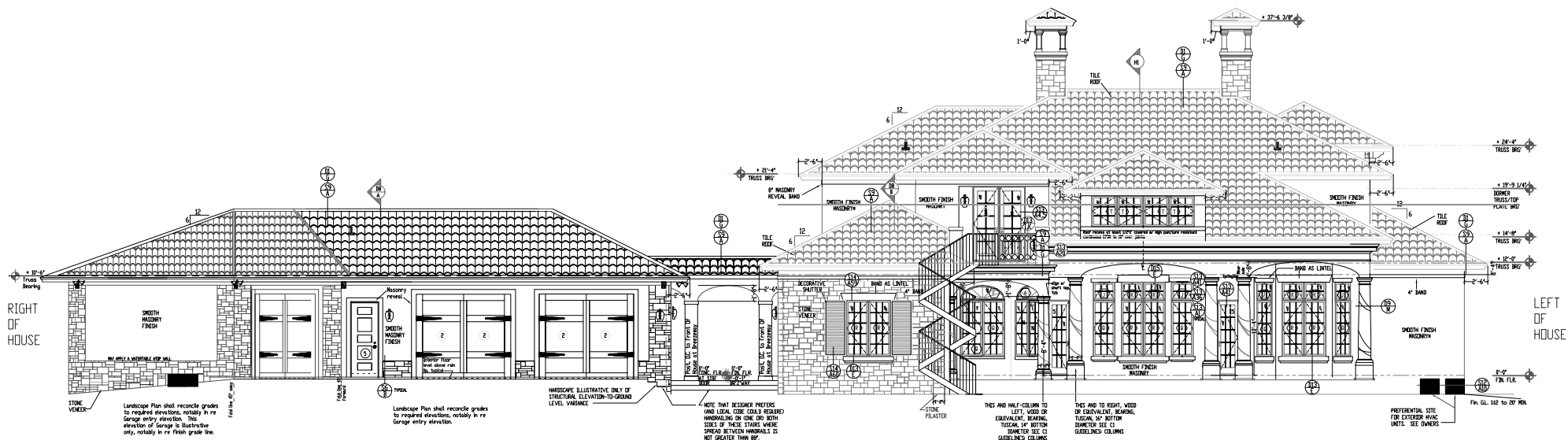


A SaterDesign Collection Plan  
 Modified U/A by  
**BEFORE THE ARCHITECT**  
<http://www.beforethearchitect.com>

Disclaimer: Before The Architect has exercised great effort and care in the modification of this home design and the completion of these construction drawings. However, others will provide independent, at-distance, and on-site consulting, supervision and construction control of materials and methods and no one on the planet can ever possibly attest to foreknowledge of all local codes, needs, and requirements to be effected in this project. Therefore, Before The Architect cannot assume responsibility for any damages, including structural failures resulting from errors or omissions in these construction drawings. There cannot be any warranty, express or implied, with respect to the content or use of this plan, including but not limited to any warranty of MERCHANTABILITY or FITNESS FOR CONSTRUCTION, DURABILITY, FUNCTION, SAFETY, or HAZARD pre- or post-construction, or any liability for any errors or omissions due to incorrect information shown on this print. Use of this print is absolutely 100% at your own risk.

Title: ELEVATIONS  
 Project: Hacienda H  
 For: Clients  
 Date: June 19, 2005



\* Smooth masonry finish shall be no more coarse than "smooth sand" stucco overall.

NOTE in re the dormer facing Back Of House with a Left Of House profile.

1. The dormer window shall rest structurally on the Back Of House beam of the Veranda.
2. The dormer windows shall be copied in shape, size, glaze, muntins, frame, and finish of the LI Great Room 3' High windows (including sashes) immediately below.
3. The dormer's height is established based on data defining 9' elevation view lines of men and women, specifically, the windows are centered on the horizontal at the mean average of a woman's view line at the lowest 5 percentile of view line height and a man's at the highest 5 percentile, when either stands shot on L2. In other words, the line of sight straight out from L2 through the dormer windows is calibrated to include the median 90 percentiles of both men and women. The data are from "Manly/Deeper ARCHITECTURAL GRAPHIC STANDARDS, 10th edition," 2000, The American Institute Of Architects, published by John Wiley & Sons, Inc., 2000, "Anthropometric Data Adult, Workstations Standing", p. 4, Comment See H.
4. The 4-window dormer shall be laid out very carefully on-site, in order to avoid conflict with the Poolroom eave. Conflict avoidance can best be achieved by close measurement of the dormer build in the direction of the Poolroom eave, with an eye to holding down trim layers in number and direction. Eaves overall are 30" from top of rafter to wall frame, and so may these be currently drawn at 2'-0", except, as a last resort it's possible to cheat a few inches virtually unrecognizably if eave conflicts persist. Indeed, this dormer element can be finished to some extent in a one-off style study for its apparent uniqueness in the overall architectural scheme.
5. Dormer width shall be determined by adequate surround to chosen windows.
6. Dormer sill plate top of face shall be not less than 5" on the vertical above sill joint to roof plane.
7. Dormer shall be sealed to another overall with continuous EPDM or equivalent best standard roofing, including valleys, roof-wall joints, sill plates, etc.

ELEVATION, BACK OF HOUSE,  
 BREEZEWAY AND GARAGE  
 SCALE: 1/4" = 1'-0"

EL2

FOR REVIEW, NOT FOR CONSTRUCTION