

KEY TO ABBREVIATIONS:

ABV = Above
APX = Approximately
BD = Bed
BEF = Before
BEL = Below
BPF = Base Point

CHG = Change
CLD = Closet
CLG = Ceiling
CNR = Corner
D = Depth
SEC = Section

DN = Down
DWN = Down
DVT = Driveway
E = East
EL = Elevation
EXT = Exterior

FIN = Foundation
FIN = Finish
FR = Family Room
G = Garage
GC = Gas Curb
GL = Grade Level

H = Height
HBR = Header
HCR = Horizontal
INC = Increase
INT = Interior
IR = Irregular RG

IV = Irregular Valley
L = Length
LF = Linear Foot/Feet
LI = Linear Inches
MAX = Maximum
MSTR = Master

N = North
NLT = Not Less Than
DN = Down
DVL = Diver Fl Level
M = Roof
RFL = Rough Floor

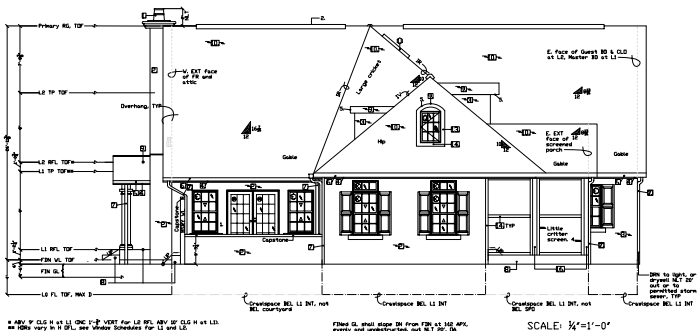
RFR = Rafter
RIG = Ridge
RL = Rain Lip
RV = RV Vent
S = South
SHTG = Sheathing

SD = See Detail
SPO = Screened P/Drch
SOG = Sub-Dr-Grade
T&G = Tongue & Groove
TIP = Top Of Plate
TP = Top Flute

TPV = Typical
UN = Unless Otherwise Noted
VERT = Vertical
V = Vent
W = Window
WV = Window
VL = Vail

LEGEND:

- Exterior Finish Schedule - Sheet 63
- ⊖ Window Schedules - Sheets 14E & 19A
- ⊖ Door Schedules - Sheets 14B & 19C
- Notes-Specific, below



RIGHT OF HOUSE
South Face

SCALE: 1/4" = 1'-0"

NOTES - GENERAL:

1. Drawing details are illustrative, not definitive. UNL, particularly for RF profiles.
2. Bats for drawing and the lines herein are approximate, subject to change.
3. D of soffits and overhangs may be varied from 1" as drawn, and can vary where R's of different pitches meet.
4. WVs are from Marvin Windows and Doors drawing files as per floor plan identifications.
5. Drawing is to scale.
6. Framing is covered on framing and RFRs are fully seated on TFS, not outset on upset, respectively, for D of SHTG and FIN clad on system. It is assumed that w/ D of either on both SHTG and clad, R's will vary and not soffits D of D's. This drawing assumes a building site flat on the HDR DA.

NOTES - SPECIFIC:

1. The courtyard fountain is omitted.
2. RV, TYP. These depictions are generic; RV profiles vary w/ rfr. RV profiles all vary when Rlines and VL lines are dimensioned for lumber and clad, respectively.
3. Nonentry main entry canis are drawn at 1 rise/25 run, to 1/3 APX.
4. Shall be fiberglass, preferably 18x14 mesh or 20x20 mesh, shall be ribbed-weave. Color: SD.
5. Corner overhangs shall be closed as soffits w/ no menders visible.

NOTE THE EL. NATH:

1. LI RFL TOP: HIC: TOP - 6" COF
GC: + G SOG TOP AT E end - 3" APX pitch down + G SOG at N end - 1" rain down - DIVY TOP AT N VL shut.
2. FIN GL = 0 SOG at N end (BEF rain down 3/8" - 6").

In other words (at LI), as stated in the table to follow on the right.

EL CHG	Site	EL CHG	EL w/ MPFG.
LI RFL TOP	15		
6" w/a GC TOP	9		
VL TOP	3		
G SOG S. TOP	6		
G SOG N. TOP	3		
LI RFL TOP	1		
FIN CLAD	0		

*) FIN GL = 20'-10" N-S. L of G at +31.5' pitch. see N.W. DRW. see 1 1/2" of rafter + 12" D of FL truss + F D. of T&G ply flt.

Copyright 2003, 2004 Before The Architect
http://www.beforethearchitect.com
Errors & Omissions

BEFORE THE ARCHITECT
Cunning, GA
http://www.beforethearchitect.com
©2003, 2004
Before The Architect