

BIND LEFT

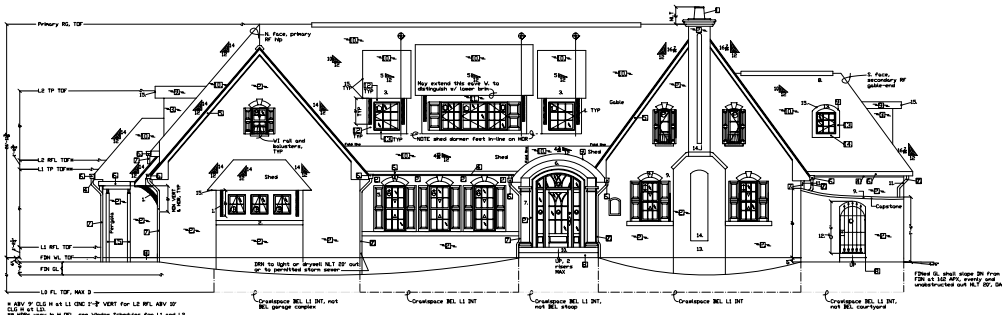
FOR REVIEW, NOT FOR CONSTRUCTION

KEY TO ABBREVIATIONS:

ABV = Above
 APX = approximately
 BEL = Below
 BEI = Between
 CL = Centerline
 CLD = Ceiling
 COL = Column
 CONT = Continuous
 D = Depth
 DIA = Diameter
 DN = Down
 DR = Door
 DRV = Driveway
 E = East
 EL = Elevation
 EXT = Exterior
 FDN = Foundation
 FIN = Finish
 FL = Floor
 NCT = Not Greater Than
 FST = Fasten
 G = Garage
 GL = Grade Level
 H = Height
 HDR = Header
 INC = Increase
 INT = Interior
 L = Length
 MAX = Maximum
 MIN = Minimum
 N = North
 NLT = Not Less Than
 NLT = Not Less Than
 DA = Over-All
 DFL = Over Floor Level
 PM = Perimeter
 RF = Roof
 RFL = Rough Floor
 RFL = Ruff Lev
 RAG = Ridge
 RV = Ridge Vent
 S = South
 SHFT = Shaft
 STRC = Structure
 T&G = Tongue & Groove
 TYP = Top Of Face
 TP = Top Plate
 TYP = TYPICAL
 UNL = Unless Otherwise Noted
 VERT = VERTICAL
 W = West
 WDV = Window
 WI = Wrought Iron
 W = WALL

LEGEND:

■ Exterior Finish Schedule - Sheet 63.
 ■ Window Schedules - Sheets 14C, 1 & 19A.
 ■ Door Schedules - Sheets 14C, 1 & 19B.
 ■ Notes-Specific, below.



FRONT OF HOUSE
 West Face

SCALE: 1/4"=1'-0"

NOTE: SEE DRV SWH WITH DR FROM C 19B
 NLT LI DR SWH

NOTES - GENERAL:

1. Drawing details are illustrative, not definitive, UNL, particularly for RF profiles.
2. Sets for framing and the trim herein are approximate, subject to change.
3. Some WDV spacing will vary w/ D of chosen EXT clad.
4. D of soffits and overhangs may be varied from 1" as drawn, and can vary where Rf's of different pitches meet so that eaves were level BET different pitches (which they are not).
5. WDV's are from Marvin Windows and Doors drawing files as per floor plan identifications.
6. Front DR is based on the drawn DR from manufacturer.
7. Sizing is to scale.
8. Drawing is correct on framing and RFRs are fully seated on TPs, not outset or upset, respectively, for D of SHFT and FIN clad or system. It is assumed that w/ D of either or both SHFT and clad, RF H will vary and not suffice D.

NOTES - SPECIFIC:

1. Braces shall match, and shall be in H&H L NLT the supported RF and in VERT L NLT 3", and shall be FST'd very securely to STRC on both sides.
2. CONT element in relief as ell. TYP.
3. Flaring elements set 4" CD's, to rough all APX, assuming 1" D of L2 FL trusses w/ P TAG ply SHFT, overhang at 9" to gap some space BET the downward side soffits hold at 12".
4. WDV elements preferably segmental, NOT RW, UNL that they could get to looking too heavy?
5. Shutters shall be paneled, not louvered the latter appearing out of character, too retroaxed.

6. Entry porch arc shall be proportioned directly to entry DR arc. All other arcs shall be less than that proportion. Non-entry arcs are drawn at 1/4 rise/23 run to 1/2 RFX.
7. CDL's shall be preferably NLT 12" DIA, smooth, round and not tapered (or not tapered much, and if tapered, then tapered the straighter the better); w/ HDN substrate, Tuscan style (exempl. typical of French Colonial Plantation style); noting that the spacing herein conforms to Tuscan proportions of L1 namely, L1cap:CDL:Wood:CDL DIA X 7", or 12" DIA w/ 7' L. Some authorities hold to a Tuscan CDL proportion of 8 DIA:as is defined, delivering a slightly less stately appearance. It is our general experience that it is difficult to design CDL's too low for an application, and much easier and much more prevalent to address CDL's too narrow.
8. RV, TYP. These selections are generic; RV profiles vary w/ rfr. RV profiles will vary when RFR's and WJ lines are dimensioned for lumber and clad, respectively.
9. Gentle, curved slope, in style. Courtyard WJ set 1" E of Front DF House.
10. INT-EXT transition at FL level NOT if change in elevation.
11. The leaders to gutters bordering the courtyard shall run to ground INT to the courtyard.
12. May increase H of DR 6" APX by setting step at DR INT to MSRY WL.
13. Potential site, among several others, for a trellis or other, solar feature.
14. Inset or other MSRT feature is in-style, in lieu of proportioned curvilinear flue stack feature.
15. Dormer overhangs shall be closed as soffits w/ no members visible.

See "NOTE THE EL. MATH on either Sheet 7 or 8.

Copyright © 2004, 2004 Before The Architect
 http://www.beforethearchitect.com
 Errors & Omissions

BEFORE THE ARCHITECT
 10000 Wilshire Blvd., Suite 1000
 Beverly Hills, CA 90210
 Tel: 310.351.0000
 Fax: 310.351.0001
 www.beforethearchitect.com

ELEVATIONS, FRONT OF HOUSE
 Project: "Lo Masón"
 Location: in the Southeast U.S.
 Sheet: 5 of 9
 Date: June 7, 2004

Description: New
 story-and-a-half detached,
 single-story-in-c ranch
 Country style.

Before The Architect
 10000 Wilshire Blvd., Suite 1000
 Beverly Hills, CA 90210
 Tel: 310.351.0000
 Fax: 310.351.0001
 www.beforethearchitect.com