

KEY TO ABBREVIATIONS:

ABV = Above
BDK = Back Of House
CNC = Concrete

Z = Depth
SDM = Dimension
FDM = Front Of House

LGH = Left Of House
NLT = Not Greater Than
MLT = Not Less Than

DA = Over/All
RF = Roof
RR = Roof Eave

RDH = Right Of House
SD = See Details
SDP = SD Plate

SPD = Screened Porch
STRC = Structure
TOP = Top Of Face

TP = Top Plate
LDH = Unless
Otherwise Noted

VERT = VERTICAL
VL = Vali.
X = except

A. COMMENTARY:

This author takes the unusual step of defining aspects of elevation profiles -

- In deference to the extraordinary complexity of this RF STRC in terms of its numerous planar and curvilinear facets, its many pitches and the interdependence of the pieces.
- In deference of the elevation drawings themselves!
- In addition to Roof Plan sheet entries (see!) LDH aspects are focused most exclusively.

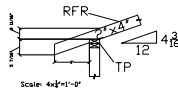
In the likely event that this RF will be hand-framed, herein under, it is assumed that xB's will be applied DA (for RR's, etc.) LDH. Every reasonable effort has been made to transmit that RF member application to the elevations illustrated herein after.

To the extent that RF members of greater or lesser LDH are applied, elevations to follow can be selected accordingly, even to include truss framing in lieu of other adjustments can be made to RF layout based on the drawings on this sheet, including, but not limited to, change in soffit Z from 2' upward, in keeping with this Country French architectural style.

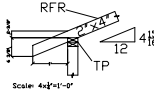
Note that 1. there is a rigorous methodology in the slopes and sequence of slope-setting to this RF's layout, as defined in the Roof Plan in later sheets 2. key to that methodology is that soffits are held to a constant 2' plumb cut from rough VL and eave lines are derived assuming a 7° fascia w/ a 6° VERT reveal after a timing level cut were required (thereby allowing a 1" A/CX soffit board and a 1" fascia profile, 3. in TDH elevation, hips and gables are sized equal to on LDH rooflines tied to the garage gable and profile and on RDH rooflines tied to the steeper Family Room chevroned rooflines.

.....
That which follows specifies the RF's planar slopes, their uses at TP and overruns at soffit intersections to VL lines, plus brief statement about drawing curvilinear rooflines.

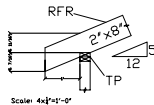
B. ROOF RISE AND EAVE STUDY
1. Main entry shed RF.



2. Office shed RF.

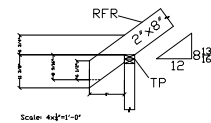


3. Shed RF corners.

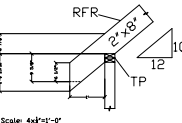


NOTE that soffit of central shed RF dormer may be extended to accentuate a sense of Refuge/Outlook. SD

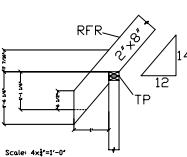
4. Both gables facing BDH.



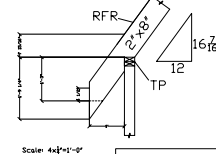
5. Primary RF.



6. Faces, LDH CX gable facing BDH.



7. Faces, RDH CX SPD.



Curvilinear dormers. In drawings of roundtop, or curvilinear dormer RFs, the author leaves the roundtop profile as H. solely based on an arc NED that of the main entry. The policy consideration here is that what framing that may be required in lieu of or in addition to stiffener seems will be framing the BDK of which will be generally if not wholly included in the geometric segment.

C. EXTERIOR FINISH SCHEDULE

- French or Tuscan cheery post. SD
- Brick in French stretcher bond, raised die, flushed or weathered mortar to match # SD
- Vinyl siding. SD
- Hard facade. SD
- 1"x8" rake, moulded. SD
- 6"x6" style aluminum gutter, white
- 2"x4" aluminum downspout and aluminum leader and fittings, white
- Brick pavers over CNC block or CNC post. SD
- Roundtop RF, preferably copper, in standing seam or smooth roll, flashing ABV EPDM blanket. SD
- High-profile composition shingle, drip edge on rakes and eaves. SD
- 1"x6" trim boards, may be F. SD
- 1"x6" trim board, may be F. SD. NOTE: SIP TOP NLT 5" on VERT ABV RF abut.
- NLT 1"x6" trim board, may be F. SD. NOTE: SIP TOP NLT 5" on VERT ABV RF abut.
- NLT 1"x6" trim board, may be F. SD
- NLT 1"x6" pressure-treated post, may be bowed or substituted w/ column similar to main entry. SD
- 1"x6" pressure-treated post, may be bowed or substituted w/ column similar to main entry. SD
- May apply in decorative relief as pediments, keys, quoins, etc. SD

Copyright 2003, 2004 Before The Architect
http://www.beforethearchitect.com
Errors & Omissions

ELEVATIONS, NOTES
 Subject: **For Clients in the Southeast US.**
 Sheet 4 of 34
 Date: June 7, 2004

Description: New detached, single owner-occupied residence in French Country style.

Before The Architect
 http://www.beforethearchitect.com
 Copyright Before The Architect
 2003, 2004