

FLOOR PLAN

SCALE: 1/4" = 1'-0"

Note Well: Sheet 1, Residential Design Standards shall apply to all Sheets hereunder from Sheet 2 to Sheet 7, Inclusive construction materials, means, and methods thereto. See Cover Sheet, Description, last sentence for subject to.

NOT FOR CONSTRUCTION. COPYRIGHTED MATERIAL. NOT TO SCALE. COPYRIGHTED MATERIAL. NOT FOR CONSTRUCTION.

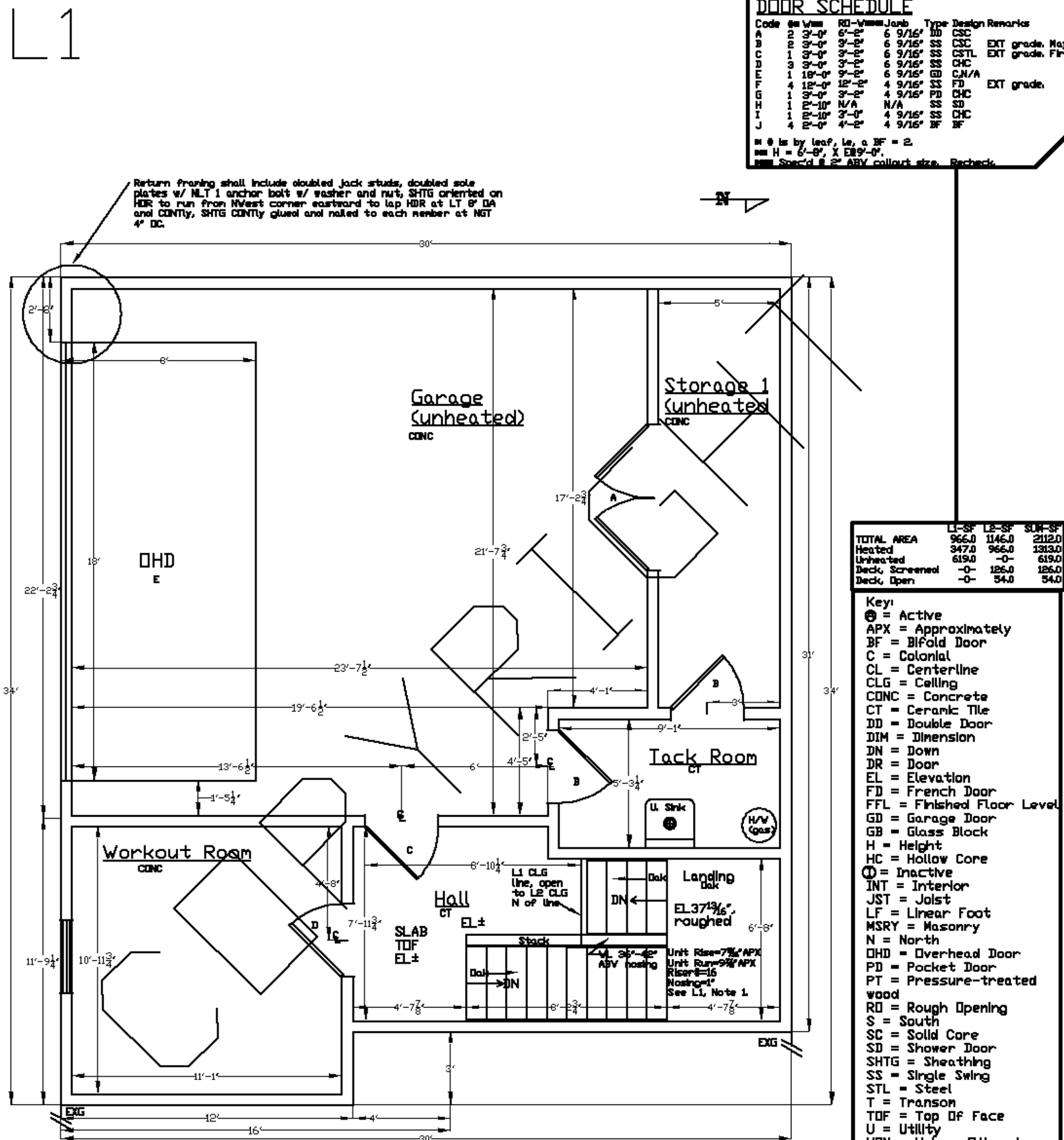
NOTES

- EXG A/C compressor and service at the Northwest corner of EXG shall be resited prior to construction. Contractor shall consult w/ owners on disposition of EXG L1 DR and WDW on EXG W.
- West WL of EXG shall be stripped to studs and plates and excavated to FIN FTGS, subsequent to which a determination of suitability shall be made of EXG abutting framing and FIN for attachment to and support of new. Thereafter, addition's DIMS may be adjusted from as-drawn.
- Casing for WDWs and DRs shall be RB-3, RDs shall be framed for NLT 6" CONT WL in all 3 directions.
- Contractor shall consult with owners on WDW and DR make and model.
- Contractor shall regard 9" CLG H, and all other DIMS as indicative and not definitive, and shall adjust drafted DIMS to achieve smooth, even, finished transitions from EXG to new for rooflines, EXT WLs, and L2 passage at floor level and INT CLG and WL planes.
- ELs are roughed to roughed, DIMs are edge to edge, framing members are drawn true.
- Assisted vents shall be rated @ NLT 150cfm exhausted in smooth, sealed metal pipe.
- Plan revisions may be required to satisfy local conditions.
- Contractor shall verify all DIMS and conditions, materials, methods, and means and be responsible for same.
- Ceramic and natural tile shall be set directly on firm, clean, even masonry or to cementitious board (cover moisture impermeable barrier in wet conditions only) over roughed floor at NLT 1/2" thick HDR and NLT 1/4" thick VERT.
- WB shall be NLT 1/2" Type X on CLGs and WLs of L1 and NLT 1/2" regular on CLGs and WLs of L2, X that Greenboard shall be applied w/in 3' on HDR and 5' DFL on VERT to fixtures including sink, lavatory counters and backsplash, commode, and steam shower at 3/4" and 1/2" thick on L1 and L2, respectively.
- HDRs and studs: HDRs DIMd shall be at inch-depth NLT foot-clearspan, X NLT 2'-2"x6" and X NLT 2'-2"x12" on N-S LB WLs on L1. Studs shall be DC NLT DC DIM of supported JSTs; 2"x6" on L1 and stairwell, 2"x4" on L2. WLs shall be let-in STL strapped, Exterior corners shall be 4-studded, rough sills doubled, mudsills PT.

DOOR SCHEDULE

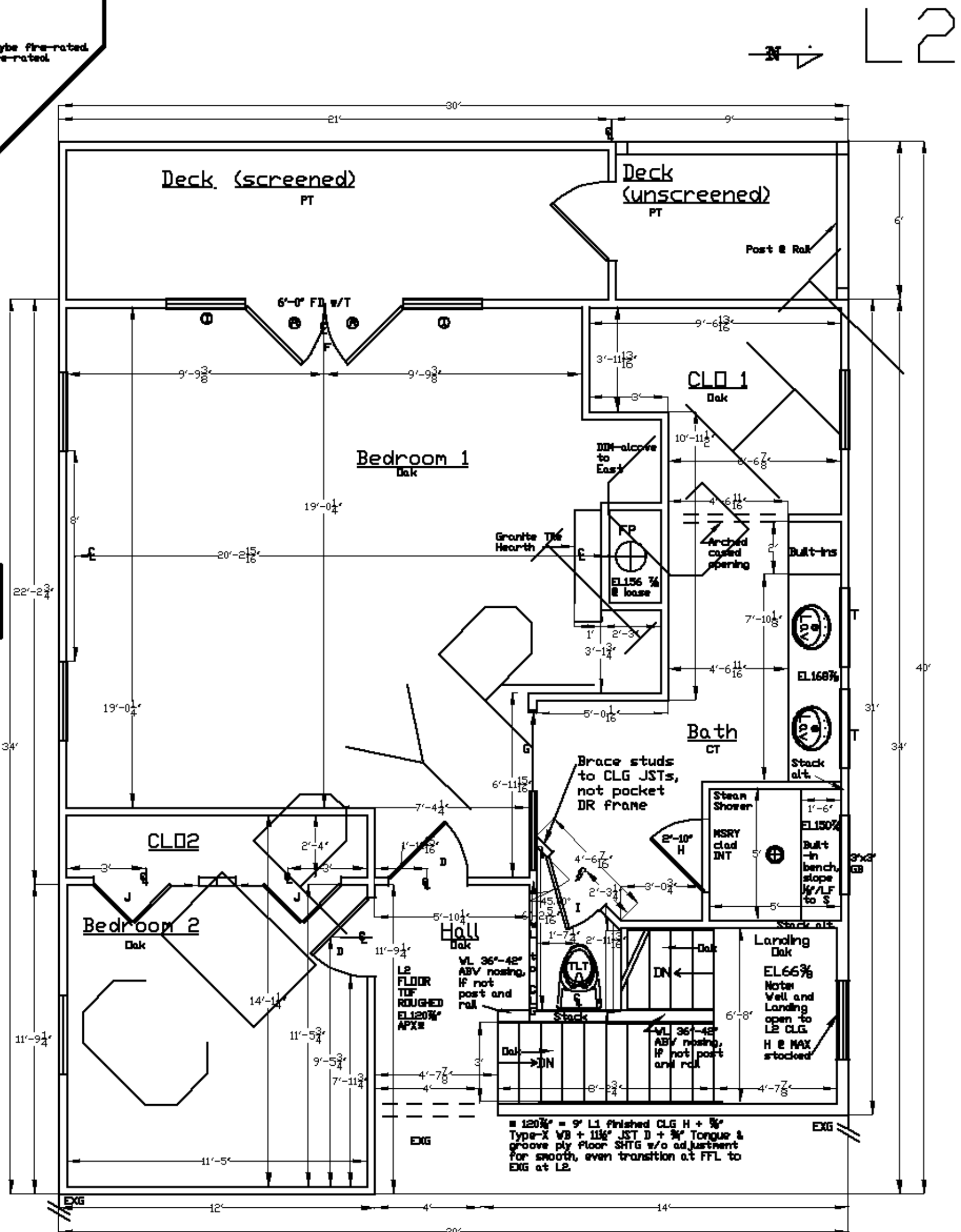
Code	Size	RD	W	Job	Type	Design Remarks
A	2'-0" x 8'-0"	6"	6'	9/16"	DB	CSC
B	2'-0" x 8'-0"	6"	6'	9/16"	SS	CSC EXT grade, Maybe fire-rated.
C	1'-0" x 8'-0"	6"	6'	9/16"	SS	CSTL EXT grade, fire-rated.
D	1'-0" x 8'-0"	6"	6'	9/16"	SS	CHC
E	1'-0" x 8'-0"	6"	6'	9/16"	ED	C,N/A
F	4'-0" x 8'-0"	6"	4'	9/16"	SS	FD EXT grade.
G	1'-0" x 8'-0"	6"	6'	9/16"	SS	CHC
H	1'-0" x 8'-0"	6"	6'	9/16"	SS	SD
I	1'-0" x 8'-0"	6"	6'	9/16"	SS	CHC
J	4'-0" x 8'-0"	6"	4'	9/16"	SS	BF

* @ is by leaf, Lx, a BF = 2
 ** H = 6'-0", X DR 9'-0"
 *** Special @ 2" ABV collout str. Recheck



	LI-SF	LE-SF	SUM-SF
TOTAL AREA	966.0	1146.0	2112.0
Heated	347.0	966.0	1313.0
Unheated	619.0	-0	619.0
Deck, Screened	-0	126.0	126.0
Deck, Open	-0	54.0	54.0

- Key**
- ⊕ = Active
 - APX = Approximately
 - BF = Bifold Door
 - C = Colonial
 - CL = Centerline
 - CLG = Ceiling
 - CONC = Concrete
 - CT = Ceramic Tile
 - DD = Double Door
 - DIM = Dimension
 - DN = Down
 - DR = Door
 - EL = Elevation
 - FD = French Door
 - FFL = Finished Floor Level
 - GD = Garage Door
 - GB = Glass Block
 - H = Height
 - HC = Hollow Core
 - ⊙ = Inactive
 - INT = Interior
 - JST = Joist
 - LF = Linear Foot
 - MSRY = Masonry
 - N = North
 - DHD = Overhead Door
 - PD = Pocket Door
 - PT = Pressure-treated wood
 - RO = Rough Opening
 - S = South
 - SC = Solid Core
 - SD = Shower Door
 - SHTG = Sheathing
 - SS = Single Swing
 - STL = Steel
 - T = Transom
 - TDF = Top Of Face
 - U = Utility
 - UDN = Unless Otherwise Noted
 - WB = Wall Board
 - WDW = Window



RESIDENTIAL FLOOR DESIGN PLAN

On: NOVEMBER 17, 2002
 For: Clients, Georgia
 By: Before The Architect,
<http://www.beforethearchitect.com>

DISCLAIMER: Before The Architect tried to do its best on this design plan print based on knowledge, experience, statements, and instructions. However, others will provide on-site consulting, supervise and control construction, and no one on the planet can ever possibly know all the codes, requirements, means, materials, and other conditions involved in this project; therefore, there cannot be any warranty, express or implied, with respect to the content or use of this print, including but not limited to any warranty of merchantability or fitness of construction, durability, function, safety, or hazards pre- or post-construction, or any liability for any errors or omissions due to incorrect information shown on this print. Use of this print is absolutely 100% at your own risk.