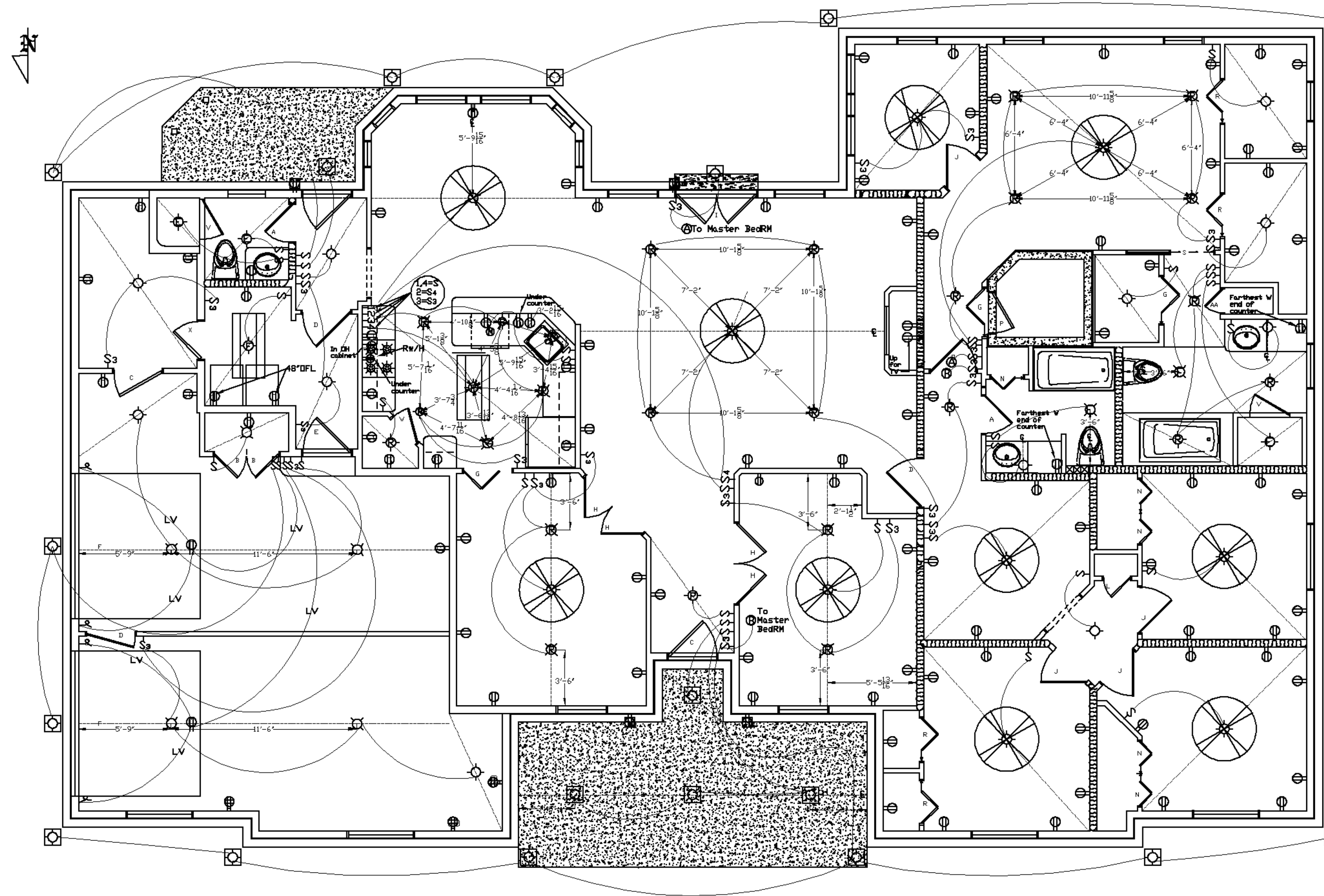


# RESIDENTIAL ELECTRICAL DESIGN PLAN TO SCALE

## GENERAL NOTES

1. See Sheet 1, Residential Design Standards, which shall apply. See Cover Sheet, Description, last sentence for subject to.
2. Gray lines are structure, for getting your bearings.
3. INT CLNG H shall be @ 9' OFL OA, flat.
4. EXT lighting outlets in soffits shall be centered on width.
5. INT lighting outlets shall be centered on center lines and spaced by DIMS.
6. Receptacle outlet siting on WLs @ CNG shall be @ installer's discretion; however, number of receptacles on a given WL segment shall be NLT the number drawn.
7. Assisted vents shall be rated @ NLT 150cfm exhausted in smooth metal pipe, sealed.
8. 3-way circuits may be connected in sequences at installer's discretion.
9. Contractor shall consult with owners regarding EXT electricity needs supplemental to those identified herein.
10. Consult local building official for requirements regarding safety glass.
11. Plan revisions may be required to satisfy local conditions.
12. Contractor shall verify all DIMS and conditions and be responsible for same.
13. Contractor shall verify with owners as to accuracy of drawing's identification of recessed and surface-mounted lights.



SCALE: 1/4" = 1' - 0"

Copyright 2002 Michael Itz & Before The Architect

## LEGEND

- |           |   |       |  |     |  |   |   |
|-----------|---|-------|--|-----|--|---|---|
| § § § § § | 120V/20A flush-mounted wall switches - single-pole, 3-way, and 4-way, respectively.   | ⊕     | 240V/30A INT flush-mounted wall receptacle, requiring 3-wire with ground.  | ⚡   | Low-voltage cable tie-off EXT to INT WL  | ▭ | INT fluorescent surface-mounted ceiling light fixture, 2 bulb (4 bulb is optional). |
| ⊕ ⊕ ⊕ ⊕ ⊕ | 120V/20A duplex receptacles for INT flush mounting - standard wall, ceiling, GFCI wall, dedicated circuit wall, GFCI plus dedicated circuit wall, 4-plex GFCI circuit wall, and 4-plex GFCI dedicated circuit wall, respectively. | ⊕ ⊕ ⊕ | 120V INT incandescent lighting fixture - standard surface-mounted ceiling, IC-rated recessed ceiling, pendulous ceiling, lighting and paddle-fan ceiling, light and exhaust fan ceiling, and surface-mounted wall, respectively. | ⊕ ⊕ | EXT grade electrical materials - a 120V/20 weather-tight duplex receptacle GFCI-protected and dedicated, and a 120 volt either recessed or surface-mounted outlet or recessed IC-rated can, at the owners' discretion, respectively. | ⊕ | Ceiling-mounted fan with light pack   |
|           |   |       |  |     |  | — | Centering lines   |

## KEY

- C/C = Cabinet over Counter
- DIM = Dimension
- DN = Down
- EL = Elevation
- FL = Floor Level
- GL = Grade Level
- H = Height
- LV = Low Voltage
- NGT = Not Greater Than
- NLT = Not Less Than
- OA = Overall
- OC = On Center
- OFL = Over Floor Level
- OH = Overhead
- RM = Room
- WL = Wall

DISCLAIMER: Before the Architect takes to do his best on this design plan print based on knowledge, experience, statements, and instructions. However, others will provide on-site consulting, supervise and control construction, and no one on the plan can ever possibly be held responsible for any errors or omissions. The Architect does not warrant the content or use of this print, including but not limited to any warranty, express or implied, with respect to the accuracy, completeness, or any errors or omissions. The Architect shall not be liable for any errors or omissions or any liability for any errors or omissions due to incorrect information shown on this print. Use of this print is absolutely 100% at your own risk.