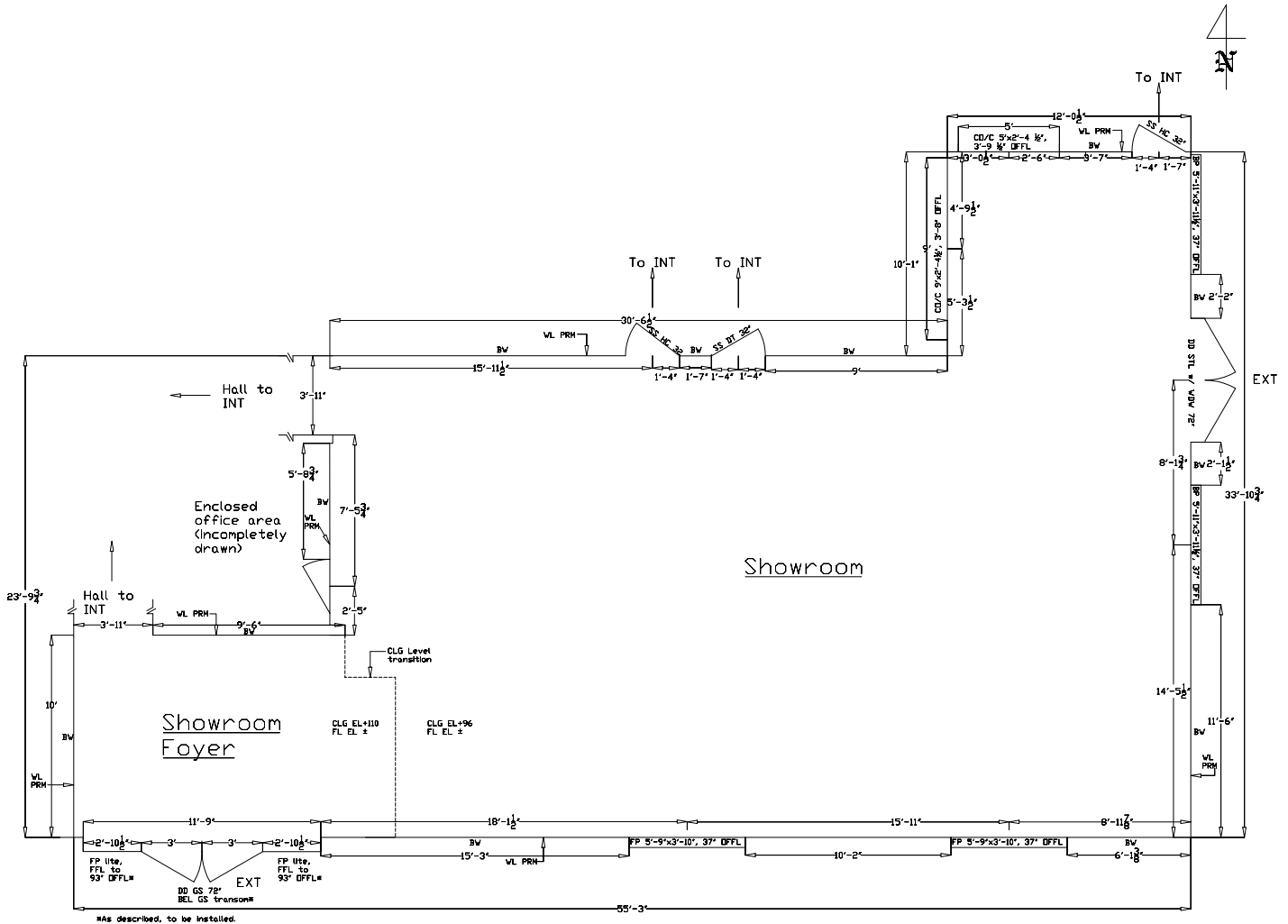


Draft: Interior Wall Perimeter and Wall Amendments, Plan View, To Scale  
 Site: Dickerson Supply Co., 1121 Huff Rd, N.W., Atlanta, GA 30318

Prepared for: Dickerson Supply Company, Atlanta, GA  
 Prepared by: Before The Architect, <http://www.beforethearchitect.com>  
 Date: April 23, 2003



Conventional layout modified to assist display-siting objective.

Copyright 2003 Before The Architect

Scale:  $\frac{1}{4}'' = 1'-0''$ .

Total Area = 1264SF

Notes:

1. Soft CLG DA evidences minor intrusions for pressured-water sprinkler heads, air management outlets, etc.; ceiling has no pendants.
2. WL and FL areas are unencumbered, unintruded, and level.
3. WLS are gypsum WB, finished smooth, painted.
4. DRs are cased, X EXT DDs.
5. FLs to be finished with ceramic tile DA.
6. Electrical receptacles and devices are not identified.
7. Plumbing supply and drains are not present.
8. Conventional layout modified to assist display siting objective.
9. Dimensions are approximate.

KEY:

- BEL = Below
- BP = By-Pass WDW (full glass)
- BW = Bare WL
- CLG = Ceiling
- CD/C = Cased Opening over Counter
- DD = Double DRs
- DR = Door
- DT = Dutch DR
- EL = Elevation
- EXT = Exterior
- FFL = Finished Floor level
- FP = Fixed Pane WDW (full glass)
- HC = Hollow Core door
- INT = Interior
- N. = North
- OFFL = Over Finished Floor Level
- PRM = Perimeter
- SS = Single Swing DR
- STL = Steel DR
- WDW = Window
- WL = Wall

**DISCLAIMER:** Before The Architects tried to do its best on this design plan based on knowledge, experience, statements, and instructions. However, others will provide on-site consulting, supervise and control construction, and no one on the planet can ever possibly know all the codes, requirements, means, materials, and other conditions involved in this project; therefore, there cannot be any warranty, express or implied, with respect to the content or use of this plan, including but not limited to any warranty of merchantability or fitness of construction, durability, function, safety, or hazards pre- or post-construction, or any liability for any errors or omissions due to incorrect information shown on this print. Use of this print is absolutely 100% at your own risk.