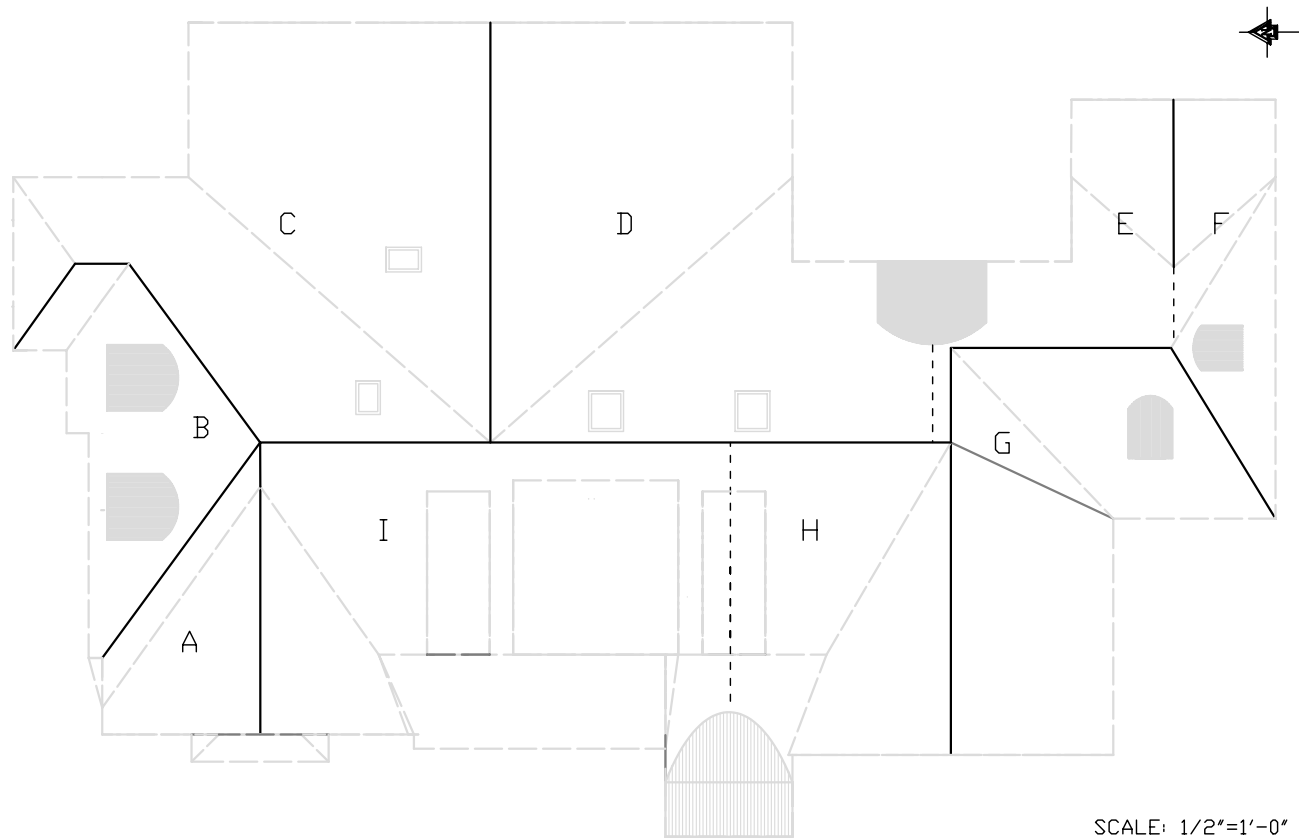


C. WS CALCULATION MAP AKA Runoff Map



SCALE: 1/2"=1'-0"

D. WS CALCULATIONS FOR 6" K-STYLE GUTTER (SF):

RF PLANE*	WS AREA:		ERN (LF-LI)	INDICATION:
	RAW	ADJ**		
A	286	343	1-0	Gutter L of ERN + NLT 1', DS toward FOH, fender on cricket edge, splash guard at valley foot.
B	368	478	35-8	Gutter L of ERN, spill G run onto shed, DS immediately BEL, U. room run w/ 1 DS plus connect to C area.
C	1208	1570	24-1	Gutter L of ERN, DS at each end and at turn, connect to B area. Splash guard at eave.
D	740	938	11-4	Gutter L of high & ERNs, DS separately. Pitch hi gutter from CL to N. and S. Gutterless in front of dormer
E	290	341	5-10	Gutter L of eave, 1 DS. Splash guard.
F	400	514	30-8	Gutter L of eave, pitch both ways from CL, DS at each end. Connect to G area. May need splash guard at V foot.
G	771	1002	29-1	Gutter L of ERN, DS at each end and at turn. Connect to F area. Splash guard at V foot.
H	547	661	6-0	Gutter L of eave, 2 DS. Pitch to W. Splash guard.
I	1072	1294	30-6	Gutter L of all 3 low eaves. 3 DS on low eaves - 2 at INT CNRs and 1 at SW. CNR of garage, unless aesthetic need for symmetry at front entry's front CNRs, then 1 more DS. Splash guards at both INT CNRs.

*See Runoff Map, this sheet, for map key. **For RF pitches.

NOTE:

- These are assumptions of application and capacity: 6" K-style gutter can DRN level to 7960SF of WS at 1 IPH BET DS and can DRN to 796SF of WS at Design Standard and 1114SF at 1/8"/LF slope; a 3"x4" DS can DRN to 1200SF of WS. Design Standard = 10 IPH. A safety factor of 2.0 is MIN.
- Though this is not the designers' preference, the shed RFs on W. & N. of Garage may be gutterless at the owners' option, if and only if: a) those RF's soffits are NLT 12" on the HDR and b) satisfactory measures are taken at GL BEL the soffits to divert splash-back onto shed WLS.